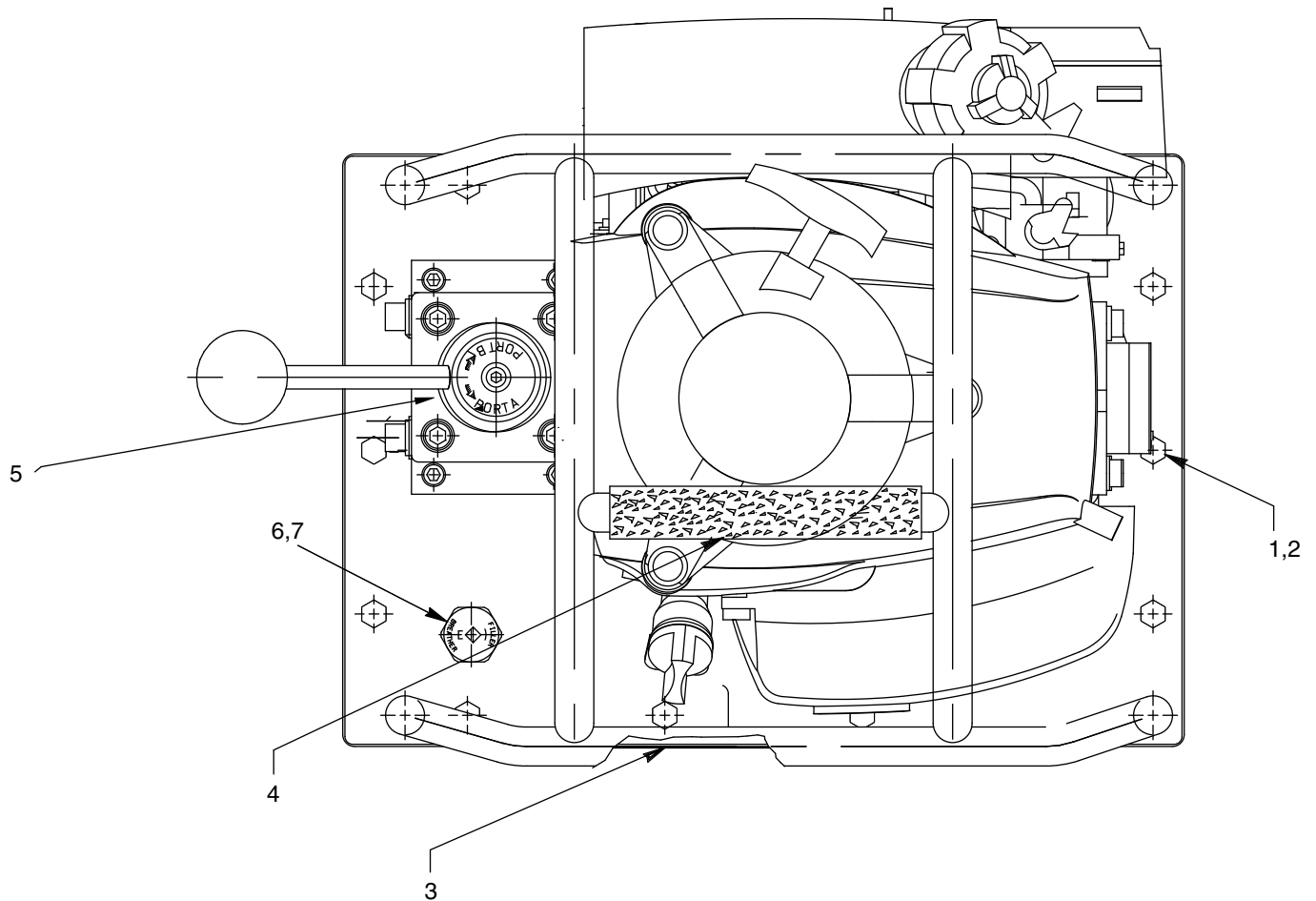


Parts List for:

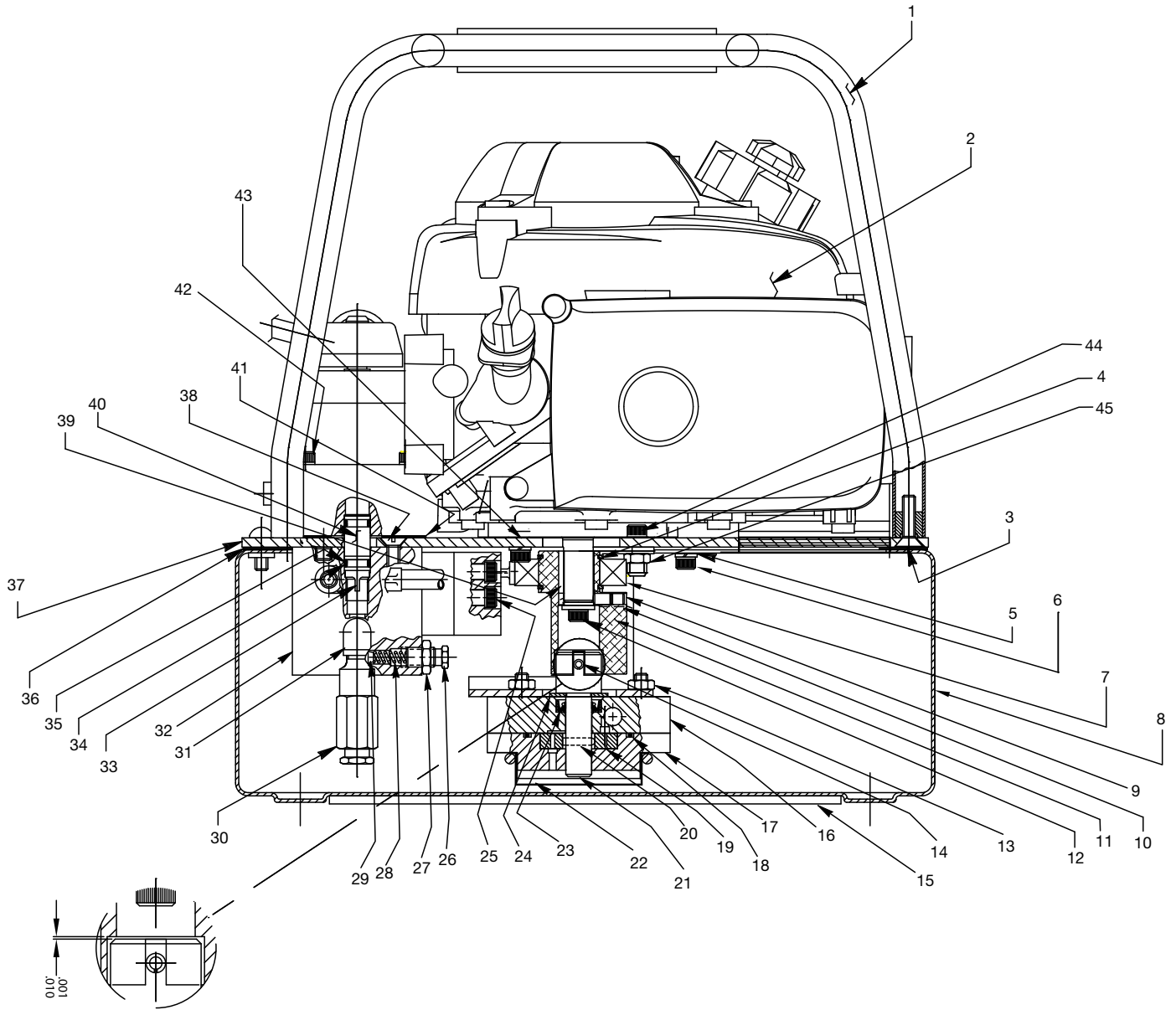
PG303
PG304

GAS HYDRAULIC PUMP Max. Capacity: 10,000 PSI



Item No.	Part No.	No. Req'd	Description
1	12825	14	Screw (1/4-20 X 1/2 Lg.; Torque to 60/80 in. lbs. Note Apply Loctite #242)
2	12719	14	Washer
3	309221	2	Decal
4	250712	1	Handle Grip (Note: Cut-off approx. 1/2" of grip end and slit the grip end to end (one side only). Apply Pronto instant adhesive CA-6 to grip and roll cage bar. Assemble grip with slit on the under side of bar.
5	9520	1	Valve (For PG303; See Form No. 101377)
	9506	1	Valve (For PG304; See Form No. 100628)
6	20937	1	Vent Cap
7	200415	1	Rubber Gasket

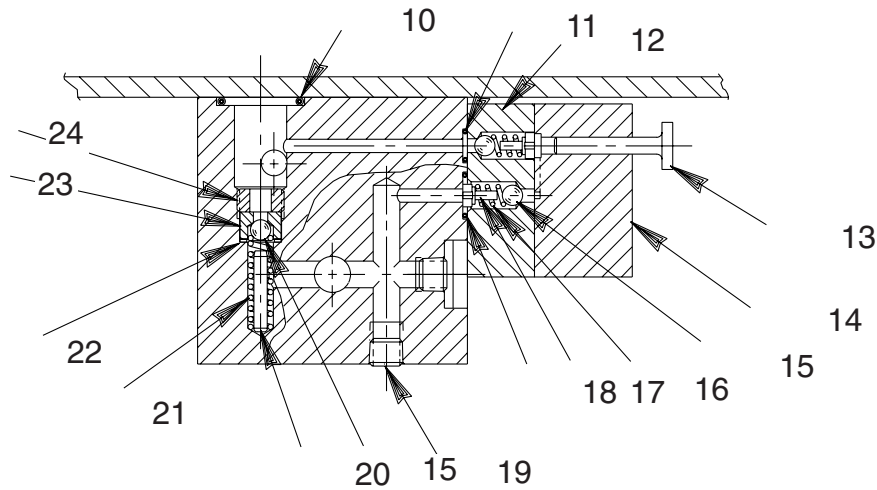
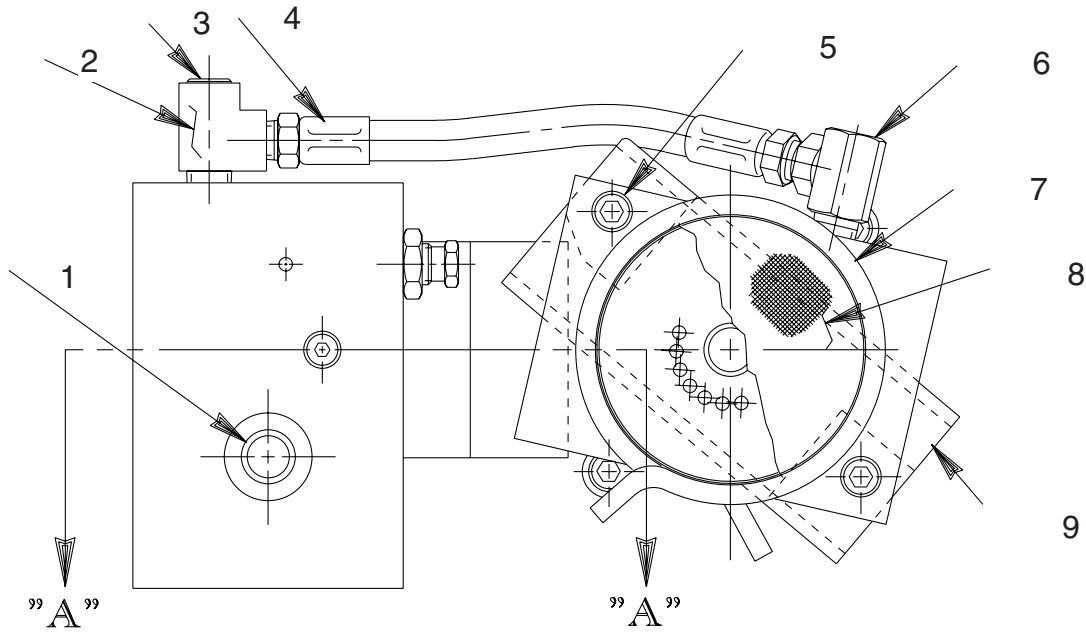
SIDE VIEW



.001
.010
Clearance Required

Item No.	Part No.	No. Req'd	Description
1	58231BK2	1	Roll Cage Frame
2	2001727	1	Gasoline Engine, Honda, 4-stroke
3	215757	4	Self-locking Flat Hd. Screw (1/4-20 UNC x 1" Lg.; Torque to 60/80 in. lbs.)
4	209798	2	Retaining Ring (1-3/16 Shaft)
5	3022-AA	4	Washer (For 1/4 bolt)
6	4539-AA	4	Cap Screw (M6 X 20mm; Torque to 100/120 in. lbs.)
7	209805	1	Ball Bearing
8	64241OR9	1	Reservoir
9	2001723	2	Set Screw (Torque to 60/80 in. lbs.)
10	2001725	1	Eccentric
11	2001728	1	Wrought Washer
12	4539-AA	1	Cap Screw (M6 X 20mm; Torque to 60/80 in. lbs.)
13	10199	2	Hex. Nut (1/4-20 UNC)
14	12298	1	Roll Pin
15	420427	1	Rubber Pad (Note: Apply 3M adhesive #08031 to bottom of reservoir and pad.)
16	64245	1	Gerotor Housing
17	64246	1	Gerotor Housing
18	10922	1	O-ring (2-1/8 X 1-15/16 X 3/32)
19	304826	1	Gerotor
20	209794	1	Gerotor Drive Pin
21	350424	1	Gerotor Shaft
22	21846	1	Filter Support
23	304830	1	Oil Seal
24	12595	1	Washer (1-1/8 X 1/2 X .077 Thk.)
25	10022	4	Screw (1/4-20 UNC X 1-1/2 Lg.; Torque to 180/200 in. lbs.)
26	29786	1	Valve Adjusting Screw
27	10386	1	Nut (3/8-24 UNF)
28	11221	1	Compression Spring (1/4 O.D. X 1" Lg.)
29	15156	1	Pin (Note: Install tapered end toward spring.)
30	21278	1	Relief Valve Assembly
31	13229	1	Street Elbow
32	64247	1	Check Body
33	209795	1	Outlet Ball Stop
34	10268	2	O-ring (1/2 X 3/8 X 1/16)
35	11863	2	Backup Washer (1/2 X 3/8 X 1/16)
36	420424	1	Reservoir Gasket (Note: Apply gasket sealer on both sides of reservoir gasket.)
37	64242BK2	1	Cover Plate
38	11529	2	Screw
39	2001724	1	Key
40	202505	1	Bushing
41	200395	1	Gasket
42	11956	4	Soc. Hd. Cap Screw (1/4-20 UNC X 3" Lg.)
43	2001722	1	Engine Gasket (Note: Apply gasket sealer on engine face and bottom side of gasket.)
44	10008	2	Cap screw (1/4 UNC X 3/4 LG)
45	10199	2	Spring (1/4-20) Apply Loctite #271

BOTTOM VIEW AND SECTION A-A



SECTION A-A

Item No.	Part No.	No. Req'd	Description
1	250630	1	Drain Tube
2	19463	1	Tee
3	10427	1	Pressure Plug (1/8 NPTF)
4	304819	1	Hose Assembly
5	10854	2	Cap Screw (3/16 O.D. X 1" Lg.; Torque to 60/80 in lbs.)
6	14440	1	Straight Fitting
7	11461	1	Hose Clamp
8	21608	1	Filter
9	2001726	1	Gerotor Housing Bracket
10	10273	1	O-ring (13/16 X 5/8 X 3/32)
11	10265	1	O-ring (5/16 X 3/16 X 1/16)
12	45559	1	Block
13	304820	1	Piston

Item No.	Part No.	No. Req'd	Description
14	45560	1	Block
15	12223	3	Ball (3/16 Dia.)
16	10445	2	Compression Spring (5/32 O.D. X 3/4 Lg.)
17	24549	2	Valve Guide
18	14763	1	O-ring (7/16 X 5/16 X 1/16)
19	15130	2	Plug (1/16 NPTF)
20	12149	1	Pin (1/8 Dia. X 3/4 Lg.)
21	16057	1	Compression Spring (3/16 O.D. X 1" Lg.)
22	10442	1	Washer (3/8 X 1/4 X 1/32)
23	209787	1	Replaceable Seat
24	209797	1	Hollow Lock Screw (Torque to 180/200 in. lbs.)

HYDRAULIC SCHEMATIC

