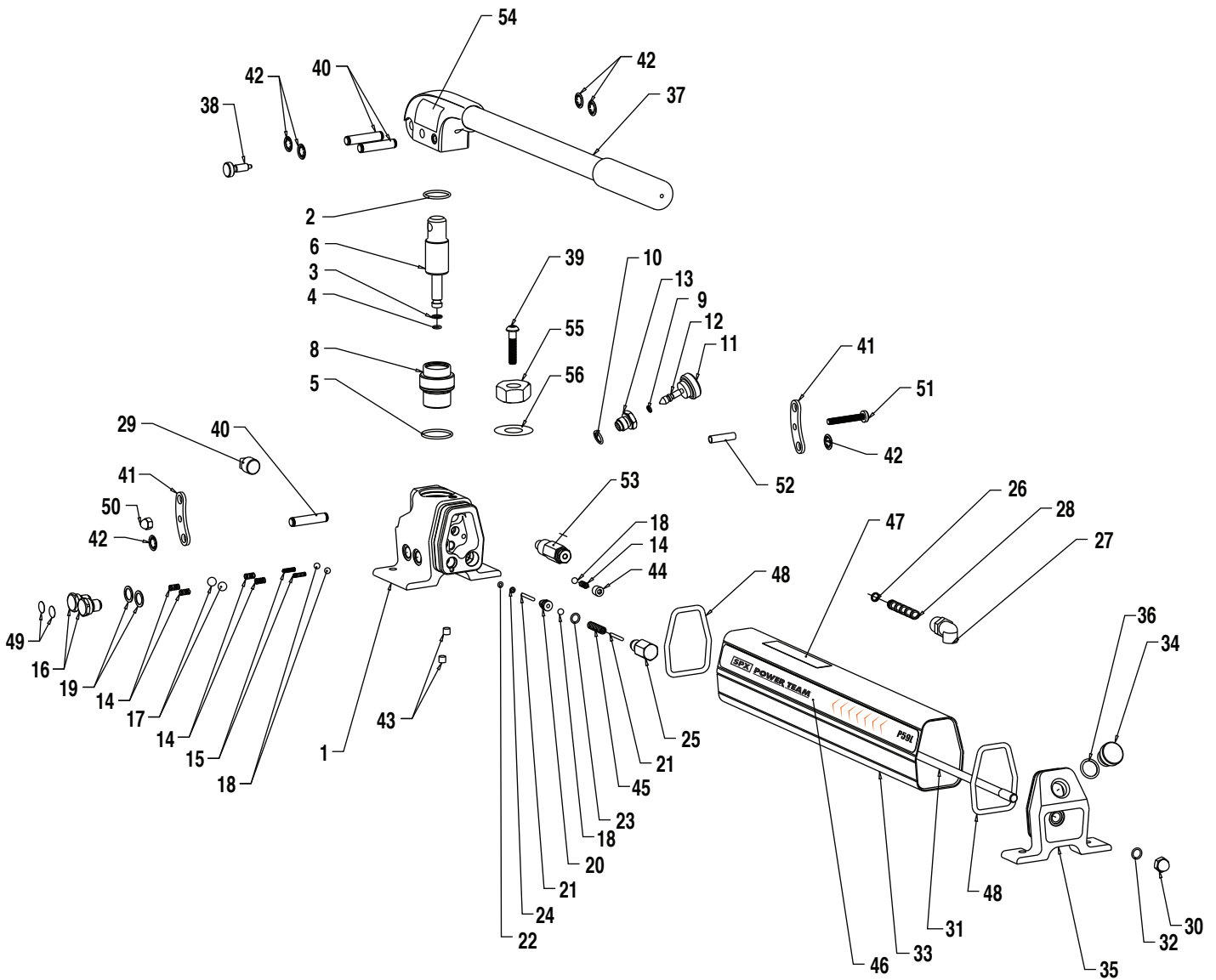


**TWO-STAGE**  
**HYDRAULIC HAND PUMP**  
 850 PSI FIRST STAGE; 10,000 PSI SECOND STAGE  
**MODEL B**



# Parts List, Form No. 1000136, Back sheet 1 of 1

| Item No. | Part No.  | No. Req'd | Description  |
|----------|-----------|-----------|--|
| 1        | 2007909   | 1         | Pump Body  |
| 2        | *2000515  | 1         | O-Ring (-120) Disogrin 1.18 x 1.00                     |
| 3        | *15085    | 1         | Washer, Backup .44 x .31                               |
| 4        | *14763    | 1         | O-ring (-011) Urethane .43 x .31                       |
| 5        | 10914     | 1         | O-Ring (-123) Nitrile 1.37 x 1.18                      |
| 6        | 2000324   | 1         | Piston, 2-Speed  |
| 8        | 2007911   | 1         | Sleeve, Piston   |
| 9        | *10265    | 1         | O-Ring (-008) Nitrile .31 x .18                        |
| 10       | *10300    | 1         | O-Ring (-906) Nitrile .62 x .46                        |
| 11       | 2000577   | 1         | Knob   |
| 12       | 2000465   | 1         | Stem   |
| 13       | 2000466   | 1         | Guide  |
| 14       | *10444    | 5         | Spring, (.25 OD x .41 x .02 WS)                        |
| 15       | *211797   | 2         | Spring .16 OD x .63 x .01 WS                           |
| 16       | 351952-Z  | 2         | Screw, Valve Zinc Plated (351952)                      |
| 17       | *10378    | 2         | Ball (3/8" Dia. Steel)                                 |
| 18       | *10375    | 4         | Ball (1/4" Dia. Steel)                                 |
| 19       | *14874    | 2         | Washer, Copper .70 x 50                                |
| 20       | *2000322  | 1         | Bushing, Unloading Valve                               |
| 21       | *16471    | 2         | Pin, Dowel (.13 x 1.00)                                |
| 22       | *10264    | 1         | O-Ring (-006) Nitrile .25 x .12                        |
| 23       | *10267    | 1         | O-Ring (-011) Nitrile .43 x .31                        |
| 24       | *214992   | 1         | Washer, Backup .24 x .13                               |
| 25       | 2000321   | 1         | Housing, Unloading Valve                               |
| 26       | *12557    | 1         | O-Ring (-009) Nitrile .34 x .21                        |
| 27       | 2000356   | 1         | Elbow 3/8 NPTF   |
| 28       | *215075   | 1         | Screen, Filter   |
| 29       | 11127     | 1         | Fitting, Plug (3/8 NPTF)                               |
| 30       | 10842     | 1         | Nut, Hex Cap (3/8-16)                                  |
| 31       | 2000326   | 1         | Rod, Tie 3/8-16 UNC x 18.5"                            |
|          | 2001450   | 1         | Rod, Tie (3/8-16 x 9.06) (P59L-FINNPOWER)              |
| 32       | *12098    | 1         | O-Ring (-013) Nitrile 70A .56 x .43                    |
| 33       | 2000316-1 | 1         | Reservoir 2.425 x 3.175 x 17.25                        |
|          | 2001449   | 1         | Reservoir, Aluminum (3.175 2.425 7.8) (P59L-FINNPOWER) |
| 34       | 351245    | 1         | Cap, Filler  |
| 35       | 2000405   | 1         | Cap, End 2.425 x 3.175                                 |
| 36       | *10274    | 1         | O-Ring (-115) Nitrile .87 x .68                        |
| 37       | 3000161   | 1         | Handle Assembly  |
| 38       | 2000327   | 1         | Plunger, Retractable                                   |
| 39       | 2000359   | 1         | Screw 5/16-18 BHCS 1.5" Lg                             |
| 40       | 2000329   | 3         | Pin, Pivot 1.78"                                       |
| 41       | 2000323   | 2         | Link   |
| 42       | *2000332  | 6         | Ring, Retaining  |
| 43       | 15130     | 2         | Fitting, Plug (1/16 NPTF)                              |
| 44       | 10427     | 1         | Fitting, Plug (1/8" NPTF)                              |
| 45       | *2000330  | 1         | Spring, Unloading Valve                                |
| 46       | 1000137   | 1         | Decal, Tradename Power Team                            |
| 47       | 1000135   | 1         | Decal, Warning   |
| 48       | *11763    | 2         | O-Ring (-333) Nitrile 70D 2.87 x 2.50                  |
| 49       | *215907   | 2         | Decal, Warning   |
| 50       | 10486     | 1         | Nut, Acorn (1/4-20)                                    |
| 51       | 2000391   | 1         | Screw (1/4-20 x 1.75)                                  |
| 52       | 2000401   | 1         | Tubing   |
| 53       | 21278     | 1         | Valve, Relief 10,000 psi                               |
|          | 21278-38  | 1         | Valve, Relief 3850 PSI (5/16) (P59L-3900)              |
| 54       | 1000143   | 1         | Decal, Locking   |
| 55       | 10385     | 1         | Nut, Hex Jam (5/16-18)                                 |
| 56       | 2007907   | 1         | Washer, Plain Hard (5/16)                              |

Part numbers marked with an asterisk (\*) are contained in Standard Repair Kit No. 3000178.

Refer to any operating instructions included with the product for detailed information about operation, testing, disassembly, reassembly, and preventive maintenance.

Items found in this parts list have been carefully tested and selected. **Therefore: Use only genuine Power Team replacement parts!**

Additional questions can be directed to our Technical Services Department.