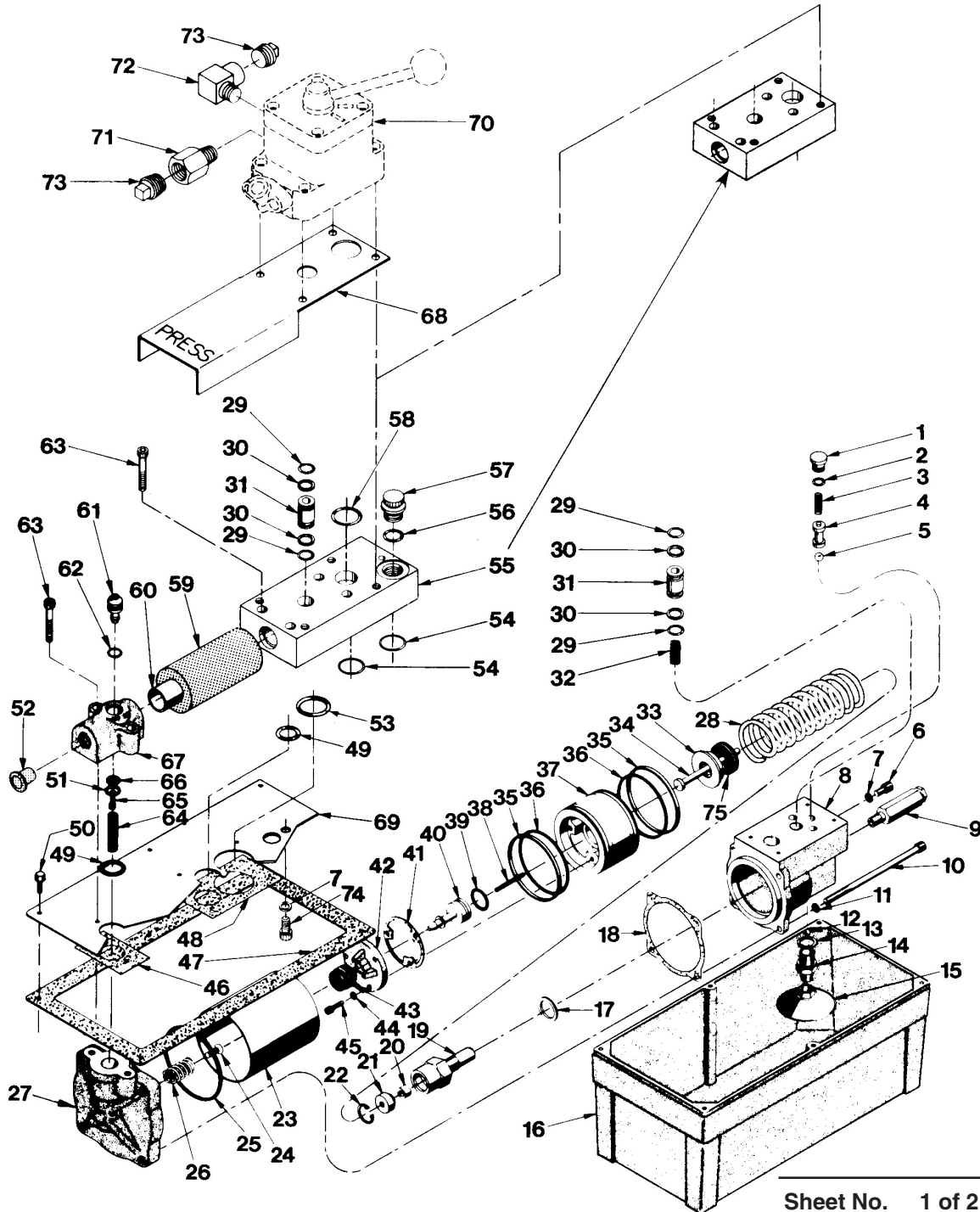


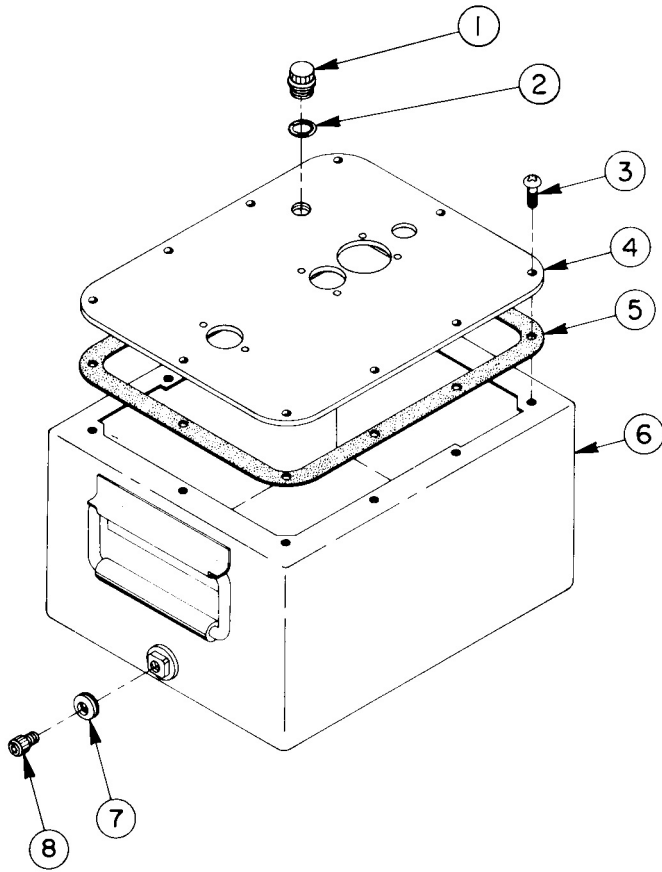
**MODEL C**  
**AIR HYDRAULIC PUMP/4-WAY VALVE**  
**FOOT/HAND OPERATED**  
**Maximum Capacity: 10,000 PSI**



# Parts List, Form No. 100434, Back sheet 1 of 2

Item No.	Part No.	No. Req'd	Description	Item No.	Part No.	No. Req'd	Description
1	<b>36497</b>	1	Check Valve Body	41	<b>*28239</b>	1	Gasket
2	<b>*12522</b>	1	O-ring, Disogrin (3/8 X 1/4 X 1/10)	42	<b>33822</b>	1	Piston End Plate
3	<b>*10445</b>	1	Compression Spring (.164 O.D. X 23/32 Lg.)	43	<b>*28183</b>	1	Piston Poppet
4	<b>202568</b>	1	Ball Guide	44	<b>10241</b>	3	Lockwasher
5	<b>*10423</b>	1	Steel Ball (9/32 Dia.)	45	<b>11434</b>	3	Cap Screw (#10-24 X 1/2 Lg.; Torque to 50/55 in. lbs.)
6	<b>10002</b>	1	Cap Screw (1/4-20 X 3/8 Lg.)	46	<b>*28858</b>	1	Gasket
7	<b>*10442</b>	2	Copper Washer (3/8 X 1/4 X 1/32)	47	<b>*33853</b>	1	Reservoir Gasket (For 2 gallon reservoir gasket. See sheet 2 of 2)
8	<b>50494</b>	1	Pump Body	48	<b>*34283</b>	1	Gasket
9	<b>21278</b>	1	Relief Valve Assembly (10,000 PSI)	49	<b>*10276</b>	2	O-ring (1" X 3/4 X 1/8)
10	<b>17428</b>	4	Cap Screw (1/4-20 X 4" Lg.)	50	<b>14456</b>	6	Screw (Torque to 25/30 in. lbs.; For 2 gallon reservoir. See sheet 2 of 2.)
11	<b>15823</b>	4	Lockwasher	51	<b>28198</b>	1	Seal Guide
12	<b>*10375</b>	1	Steel Ball (1/4 Dia.; For PA6D, D-01115AA)	52	<b>14794</b>	1	Plastic Plug
	<b>*10423</b>	1	Steel Ball (9/32 Dia.; For PA6D-2, Y12-MGW)	53	<b>*10281</b>	1	O-ring (1-1/2" X 1-1/4" X 1/8)
13	<b>*10261</b>	1	Soft Copper Washer (19/32 X 3/4 X 1/32)	54	<b>*12549</b>	2	O-ring (13/16 X 11/16 XC 1/16)
14	<b>33848</b>	1	Filter Adapter, Short (Torque to 35/40 ft. lbs. oiled; For PA6D, D-01115AA)	55	<b>50888</b>	1	Manifold Block (For PA6D, D-01115AA)
	<b>37722</b>	1	Filter Adapter, Long (Torque to 35/40 ft. lbs. oiled; For PA6D-2, Y12-MGW)		<b>51734</b>	1	Manifold Block (For PA6D-2, Y12-MGW)
15	<b>27680</b>	1	Filter Assembly (For PA6D, D-01115AA)	56	<b>*10300</b>	1	O-ring (5/8 X .468 X .078)
	<b>29682</b>	1	Filter Assembly (For PA6D-2, Y12-MGW)	57	<b>24132</b>	1	Filler Plug (For PA6D, D-01115AA)
16	<b>41300BR13</b>	1	Reservoir (For D-01115AA)	58	<b>*10275</b>	1	O-ring (15/16 X 3/4 X 3/32; For PA6D; D-01115AA)
	<b>41300OR9</b>	1	Reservoir (For PA6D)	59	<b>*29992</b>	1	Foam Tube
	<b>60597OR9</b>	1	2 Gallon Reservoir (For PA6D-2; See sheet 2 of 2.)	60	<b>28387</b>	1	Muffler
	<b>60597BL2</b>	1	2 Gallon Reservoir (For Y12-MGW; See sheet 2 of 2.)	61	<b>33841</b>	1	Actuator Button
17	<b>*10263</b>	1	Soft Copper Washer (49/32 X 1" X 1/32)	62	<b>*10267</b>	1	O-ring (7/16 X 5/16 X 1/16)
18	<b>*28979</b>	1	Gasket	63	<b>11151</b>	6	Cap Screw (#10-24 X 1-1/4" Lg.)
19	<b>33847</b>	1	Cylinder (Torque to 90/100 ft. lbs. oiled)	64	<b>*12691</b>	1	Compression Spring (3/8 O.D. X 1-1/2" Lg.)
20	<b>*13934</b>	1	Packing U-cup (1/2 X 1/4 X 1/4)	65	<b>13936</b>	1	Cap screw (#8-32 X 1/4 Lg.)
21	<b>28224</b>	1	Retainer Nut	66	<b>*28182</b>	1	Air Valve Poppet
22	<b>*11034</b>	1	Retaining Ring	67	<b>33843</b>	1	Intake Air Valve (For D-01115AA)
23	<b>37434</b>	1	Air Cylinder (Locate groove toward top near cover plate.)		<b>37199</b>	1	Intake Air Valve (For PA6D, PA6D-2, Y12-MGW)
24	<b>205674</b>	1	Cap Screw (8-32 X 3/8 Lg.; Torque to 25/35 in. lbs.)	68	<b>38956BK2</b>	1	Foot Plate
25	<b>*17429</b>	1	Backup Ring	69	<b>51479WH2</b>	1	Cover Plate (For 2 gallon reservoir; See sheet 2 of 2.)
26	<b>205679</b>	1	Compression Spring	70	<b>42314</b>	1	3-Way/4-Way Valve (For D-01115AA, Y12-MGW; [See Form #100374.])
27	<b>51480</b>	1	Rear Head		<b>V24</b>	1	3-Way/4-Way Valve (For PA6D, PA6D-2 [See Form #100374.])
28	<b>13938</b>	1	Compression Spring (1-3/16" I.D. X 5" Lg.)	71	<b>13888</b>	1	Pipe Connector
29	<b>*10268</b>	4	O-ring (1/2 X 3/8 X 1/16)	72	<b>16797</b>	1	Elbow (90°)
30	<b>*10311</b>	4	Backup Washer	73	<b>11127</b>	2	Pipe Plug (3/8 NPTF)
31	<b>21094</b>	2	Bushing	74	<b>10807</b>	1	Cap Screw (1/4-20 X 1/2 Lg.; For PA6D, D-01115AA)
32	<b>16448</b>	1	Spring (5/16 O.D. X 13/16 Lg.)	75	<b>203143</b>	1	Bumper (For PA6D, PA6D-2, Y12-MGW)
33	<b>28222</b>	1	Spring Guide	<b>PARTS INCLUDED BUT NOT SHOWN</b>			
34	<b>28226</b>	1	Piston	<b>*14350</b>	1	Warning Decal	
35	<b>*14265</b>	2	Piston Ring	<b>*15411</b>	1	Patent Information Decal	
36	<b>*11229</b>	2	O-ring (2-3/8" X 2-3/16" X 3/32)	<b>201826</b>	2	Decal (D-01115AA)	
37	<b>33824</b>	1	Piston Body	<b>206199</b>	2	Decal (PA6D, PA6D-2)	
38	<b>*12692</b>	1	Spring (3/16 O.D. X 1-1/2" Lg.)	<b>11280</b>	2	Decal (Y12-MGW)	
39	<b>*10303</b>	1	O-ring (7/8 X 3/4 X 1/16)	<b>12204</b>	1	Venting Decal	
40	<b>33845</b>	1	Exhaust Valve Stem	<b>13229</b>	1	Street Elbow (Used with Relief Valve on PA6D-2, Y12-MGW)	

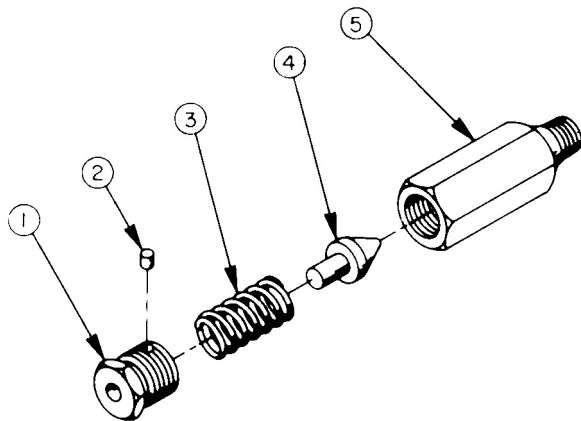
Part numbers marked with an asterisk (\*) are contained in Repair Kit No. 300132.



### TWO GALLON RESERVOIR ASSEMBLY

Item No.	Part No.	No. Req'd	Description
1	24132	1	Filler Cap
2	17120	1	O-ring
3	10177	10	Machine Screw (1/4-20 X 3/4 Lg.)
4	51715WH2	1	Cover Plate
5	40164	1	Cover Plate Gasket
6	60597OR9	1	Reservoir (For PA6D-2)
	60597BL2	1	Reservoir (For Y12-MGW)
7	19779	1	Seal Washer
8	13808	1	Cap Screw (3/8-16 X 3/4 Lg.)

### RELIEF VALVE ASSEMBLY



Item No.	Part No.	No. Req'd	Description
1	24471	1	Adjusting Plug
2	24463	1	Insert (Nylock)
3	10428	1	Spring
4	21046	1	Cone
5	21286	1	Valve Body

Refer to any operating instructions included with this product for detailed information about operation, testing, disassembly, reassembly, and preventive maintenance.

Items found in this parts list have been carefully tested and selected. **Therefore: Use only genuine replacement parts!**

Additional questions can be directed to our Technical Services Department.