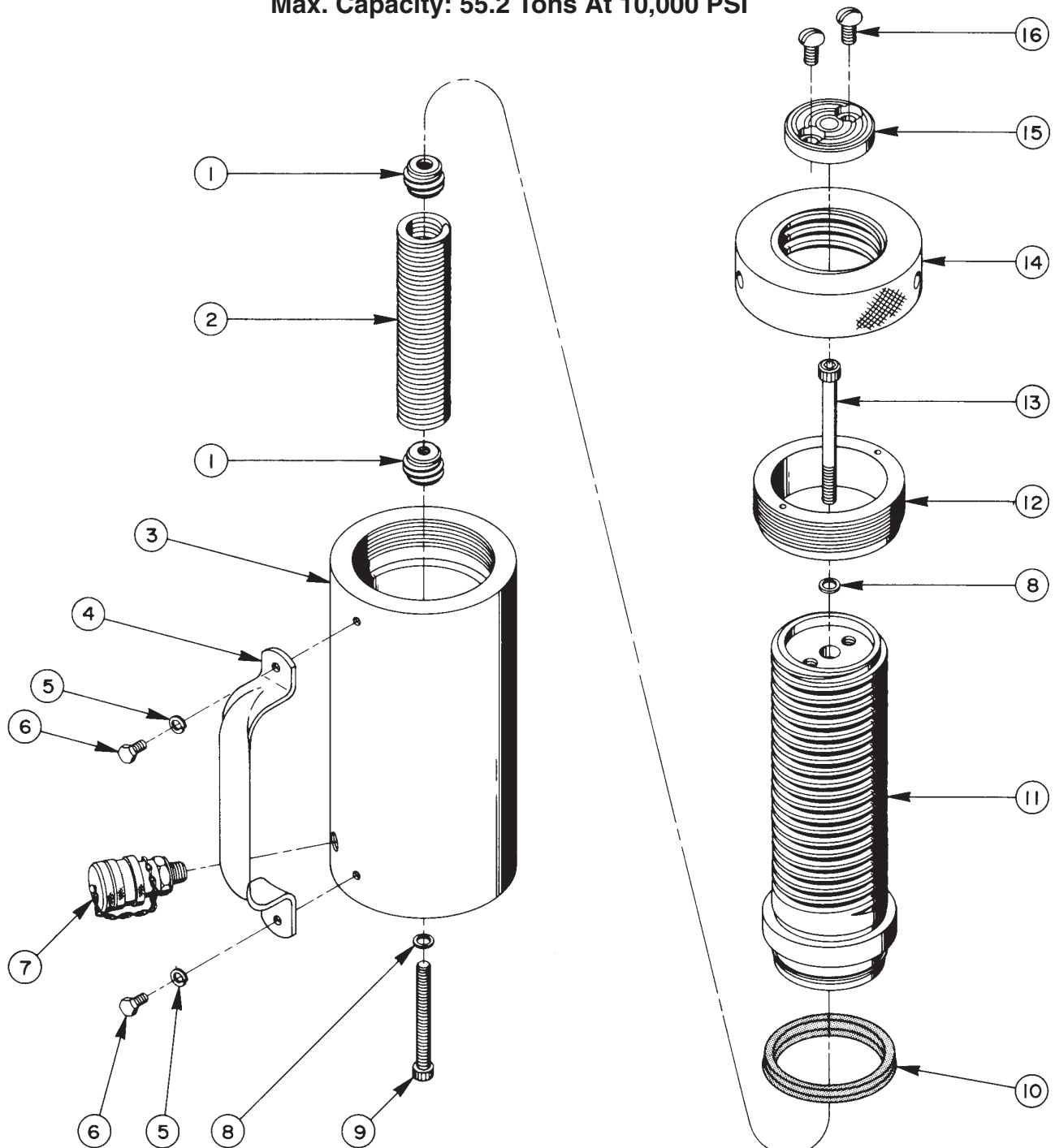


**SINGLE-ACTING, SPRING RETURN
HYDRAULIC CYLINDER**
Max. Capacity: 55.2 Tons At 10,000 PSI



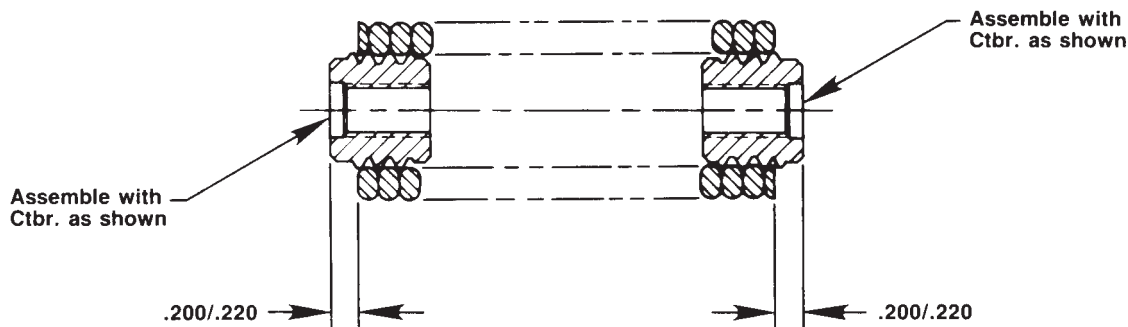
Item No.	Part No.	No. Req'd	Description
1	201417	2	Spring Retainer (See diagram below)
2	201488	1	Extension Spring (See diagram below)
3	51585	1	Cylinder Body
4	35903	1	Handle
5	10244	2	Lockwasher
6	10005	2	Cap Screw (1/4-20 x 1/2 Lg.)
7	9796	1	Ram Half Coupler w/ Plastic Dust Cap
8	*12042	2	Copper Washer (9/16 X 3/8 X 1/32)
9	16110	1	Cap Screw (3/8-16 UNC X 3-1/2 Lg.; Torque to 400/425 in. lbs.)
10	*13411	1	U-cup
11	52202	1	Piston
12	45635	1	Retainer Nut (Torque to 90/100 ft. lbs.)
13	12300	1	Cap Screw (3/8-16 UNC x 4" Lg.; Torque to 400/425 in. lbs.)
14	45634	1	Locking Ring
15	304952	1	Front Plate
16	16112	2	Machine Screw (3/8-16 UNC X 3/4 Lg.; Torque to 50/60 in. lbs.)

PARTS INCLUDED BUT NOT SHOWN

200056	1	Locknut Handle
210210	1	Trade Name Decal
*304937	1	Warning Decal
*37782	1	Caution Decal

Part numbers marked with an asterisk (*) are contained in Repair Kit No. 300395.

SPRING & RETAINER ASSEMBLY



Refer to any operating instructions included with this product for detailed information about operation, testing, disassembly, reassembly, and preventive maintenance.

Items found in this parts list have been carefully tested and selected. **Therefore: Use only genuine Power Team replacement parts!**

Additional questions can be directed to our Technical Services Department.