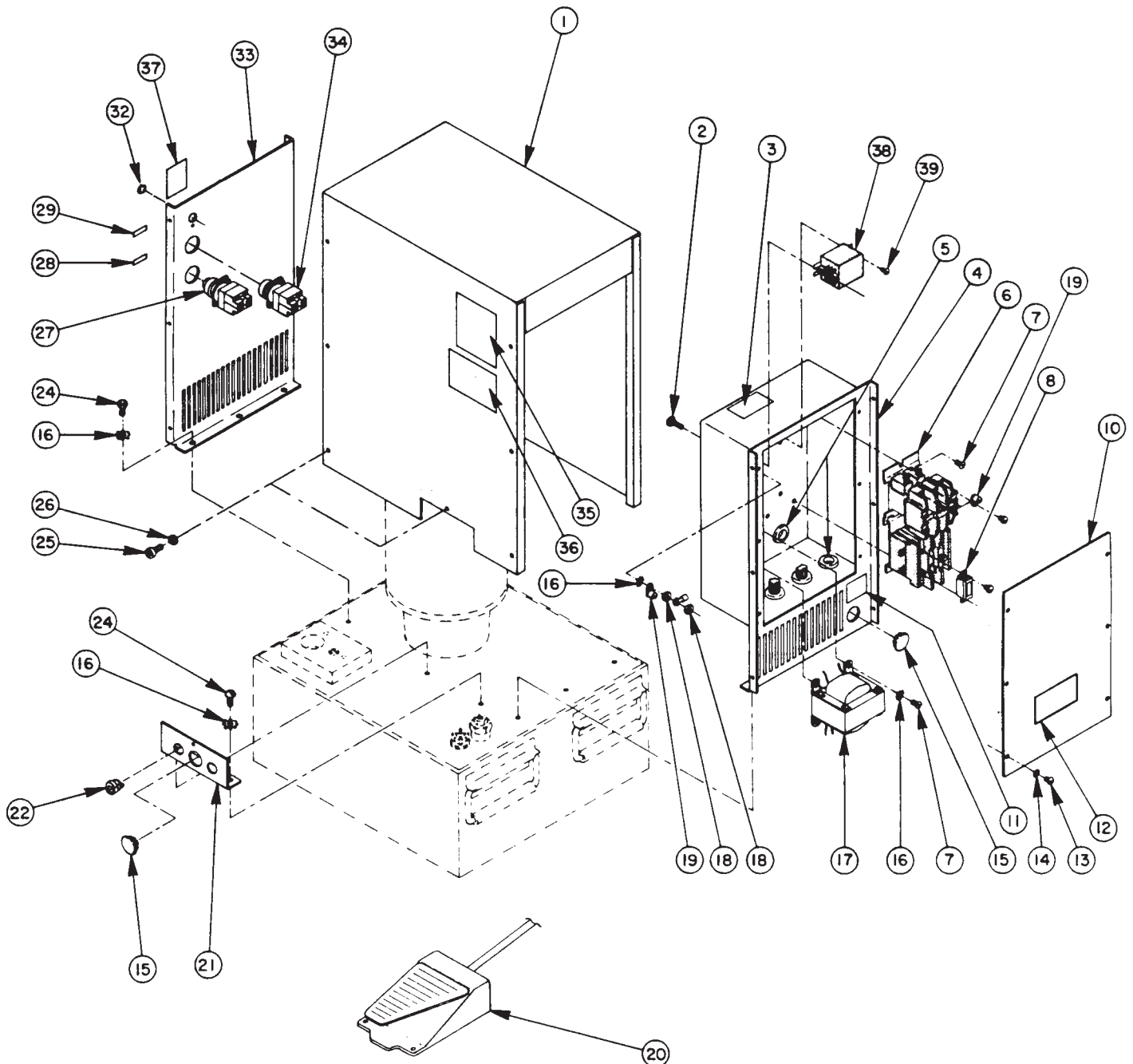
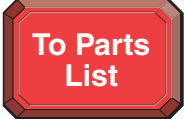


## MODEL C ELECTRIC TWO-STAGE HYDRAULIC PUMP CONTROL BOX & COVER ASSEMBLY



# Parts List, Form No. 101366, Back sheet 1 of 4

Item No.	Part No.	No. Req'd	Description
1	50946WH2	1	Shroud Cover
2	104484	1	Machine Screw (#10-24 X 3/4 Lg.)
3	202504	1	Rotation Decal
4	60235OR9	1	End Panel & Electrical Box
5	15497	6	Rubber Grommet
6	17861-4	1	Magnetic Starter
7	10164	AR	Machine Screw (#10-24 X 3/8 Lg.)
8	16641-54	3	Starter Heater (230 V., 60 Hz; For all pump built before 5-1-96)
	16641-57	3	Starter Heater (230 V., 60 Hz.; For all pump built after 5-1-96 and before 6-1-99)
	16641-61	3	Starter Heater (230 V., 60 Hz.; For all pump built after 6-1-99)
	16641-47	3	Starter Heater (380 V., 50 Hz.)
10	41457OR9	1	Cover Plate
11	39266	1	Voltage Decal
12	200188	1	Warning Decal
13	10975	6	Pan Hd. Mach. Screw (#8-32 X 5/16 Lg.)
14	11107	6	Serrated Washer (#8 Internal)
15	15327	2	Snap Plug (For 7/8" Hole)
16	11108	AR	Serrated Washer (#10 External)
17	39693	1	Transformer (For PQ1203-CCL)
	39750	1	Transformer (For PQ1203-CCL-380)
18	10197	2	Hex Nut (#10-24)
19	205420	4	Lug Connector
20	10461	1	Remote Foot Control Ass'y
21	36746WH2	1	Angle Plate
22	15993	1	Strain Relief Bushing
24	16613	8	Pan Hd. Mach. Screw (#10-24 X 5/16 Lg.)

Item No.	Part No.	No. Req'd	Description
25	14394	AR	Self-Tapping Screw (#10 X 3/8 Lg.)
26	12356	AR	Serrated Washer (#10 Internal)
27	251277	1	Pushbutton Actuator (Red)
	251276	1	Contact Block
28	203769	1	Stop Decal
29	203808	1	Start Decal
32	13971	1	Snap Plug
33	51124OR9	1	End Panel
34	39282	1	Pushbutton Switch (Green)
35	36765	2	Trade Name Decal
36	39266	1	Rating Decal
37	204015	1	Instruction Decal
38	39092	1	Control Relay-24V
39	10159	2	Rd. Hd. Mach. Screw (#6-32 X 5/16 Lg.; Used to mount Control Relay)

## PARTS INCLUDED BUT NOT SHOWN

9041	1	Pressure Gauge
12740	1	Pipe Connector
10672	1	Straight Fitting
204610	1	Motor Leads Decal
205189	1	Ground Decal
350165	1	Automatic Valve (See Form No. 101200)
52203	1	Pressure Switch Assembly (See Form No. 100589)
206765	1	Full Flow Oil Filter
251315	1	45° Elbow Fitting
17432	1	45° Elbow
309219	1	Decal

AR = As Required



Note: Shaded areas reflect last revision(s) made to this form.

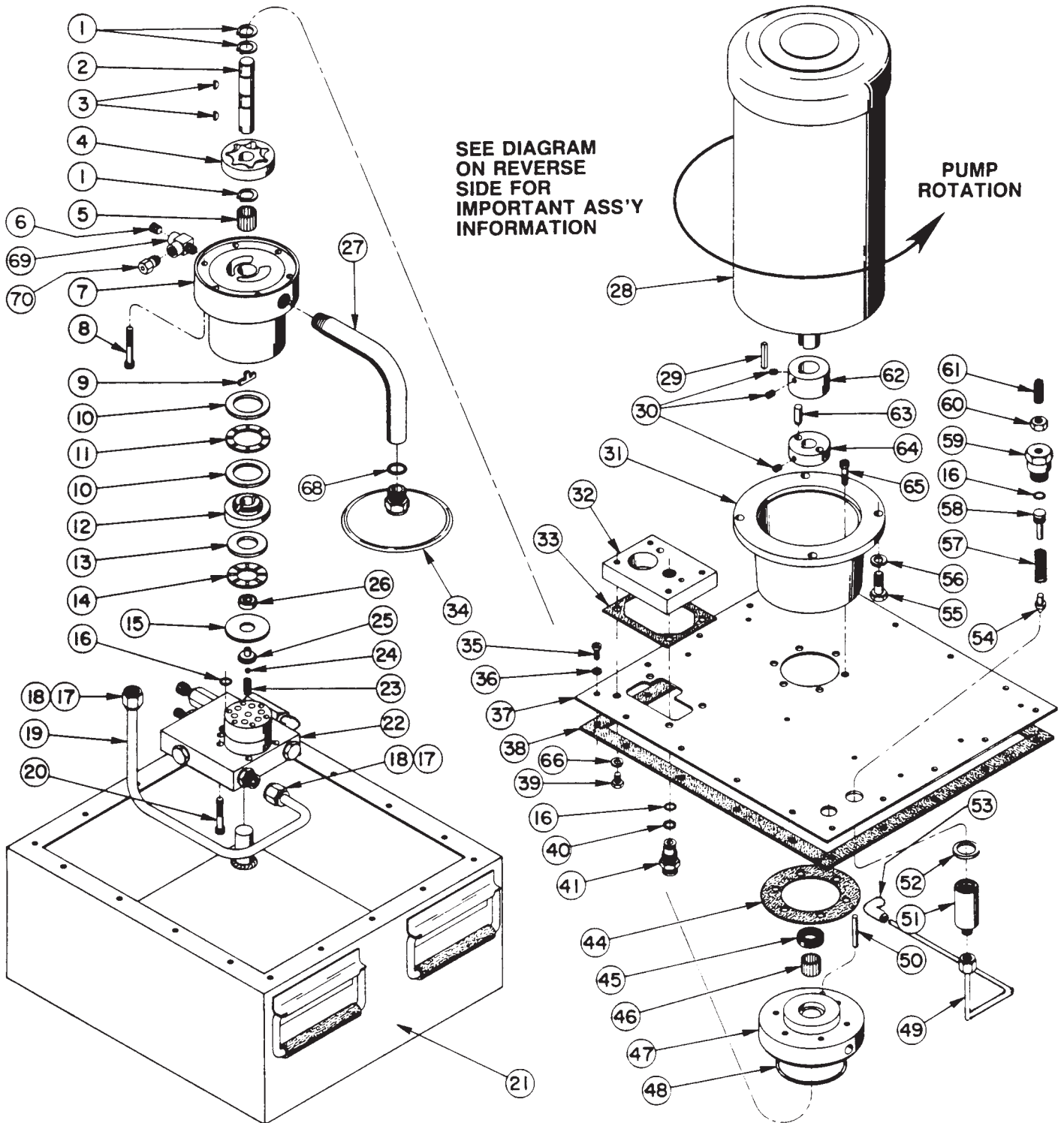
Refer to any operating instructions included with this product for detailed information about operation, testing, disassembly, reassembly, and preventive maintenance.

Items found in this parts list have been carefully tested and selected. **Therefore: Use only genuine Power Team replacement parts!**

Additional questions can be directed to our Technical Services Department.



# BASIC PUMP ASSEMBLY



# Parts List, Form No. 101366, Back sheet 2 of 4

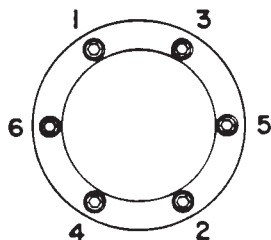
Item No.	Part No.	No. Req'd	Description
1	12178	2	Retaining Ring
	**12178	3	Retaining Ring
2	35272	1	Pump Shaft
	**303009	1	Pump Shaft
3	12179	2	Woodruff Key
4	15428	1	Gerotor Set
5	15461	1	Needle Bearing
6	10427	1	Pipe Plug (1/8 NPTF)
7	50705	1	Pump Housing
8	10854	6	Soc. Hd. Cap Screw (1/4-20 X 1-3/4 Lg.; See Note Below)
9	200397	1	Key
10	11227	2	Needle Thrust Race
11	11228	1	Needle Thrust Bearing
12	35271	1	Angle Plate
13	15432	1	Needle Thrust Race
14	15431	1	Needle Thrust Bearing
15	23548	1	Top Plate
16	10268	3	O-ring (1/2 X 3/8 X 1/16, -012)
17	10430	2	Tube Sleeve
18	10431	2	Tube Nut
19	35281	1	Oil Line (3/8 Dia.)
20	10022	5	Soc. Hd. Cap Screw (1/4-20 X 1-1/2 Lg.; Torque to 110/120 in. lbs.)
21	60622OR9	1	Reservoir
22	41833	1	High Pressure Pump Ass'y (See sheet 3 of 4; Adjustment required)
23	10361	1	Compression Spring (1/4 O.D. X 1" Lg.)
24	10375	1	Steel Ball (1/4 Dia.)
25	23547	1	Top Bearing Plate
26	11814	1	Ball Bearing
27	204242	1	Tube Extension
28	59333	1	Motor (3 H.P., 220/230 V, 50/60 Hz)
29	27778	1	Square Key
30	10133	2	Soc. Hd. Set Screw (#10-24 X 1/4 Lg.)
	**10133	3	Soc. Hd. Set Screw (#10-24 X 1/4 Lg.)
31	41838	1	Motor Mount
32	43110	1	Valve Mounting Block
33	200395	1	Gasket
34	21345	1	Filter Ass'y
35	16876	18	Mach. Screw (#10-24 X 1/2 Lg.)
36	12356	18	Serrated Washer (#10 Internal)

Item No.	Part No.	No. Req'd	Description
37	60231WH2	1	Cover Plate (.104 Thk.)
	**60922	1	Cover Plate (.164 Thk.)
38	50712	1	Cover Gasket
39	10004	4	Cap Screw (1/4-20 X 3/8 Lg.)
	**10005	4	Cap Screw (1/4-20 X 1/2 Lg.)
40	10311	1	Backup Washer (1/2 X 3/8 X 1/16)
41	20787	1	Connector
44	35266	1	Gasket
45	12194	1	Seal
46	15430	1	Needle Bearing
47	50706	1	Gerotor Pump Housing
48	12504	1	O-ring (3" X 2-13/16 X 3/32)
49	350524	1	Oil Line Ass'y with Fittings (3/16 Dia.)
50	13152	1	Dowel Pin (3/16 X 1-1/2 Lg.)
51	22361	1	Body
52	17065	1	Flat Washer (.125 Thk.)
	**14857	1	Flat Washer (.062 Thk.)
53	16177	1	90° Elbow Fitting
54	21046	1	Valve Stem
55	10049	4	Cap Screw (3/8-16 X 1" Lg.)
56	10247	4	Lockwasher
57	10495	1	Compression Spring (1/2 O.D. X 1-5/8 Lg.)
58	21306	1	Spring Guide
59	21305	1	Valve Cap
60	10386	1	Hex Nut (3/8-24)
61	22362	1	Valve Adjusting Screw
62	200396	1	Coupling
	**207440	1	Coupling
63	206372	2	Nylon Pin
64	27001	1	Coupling
65	10012	6	Cap Screw (1/4-20 X 7/8 Lg.; Torque to 110/120 in. lbs.)
66	**10244	4	Lockwasher
68	10527	1	O-ring (13/16 X .644 X .087)
69	18969	1	Tee Fitting
70	306957	1	Air Bleed Valve

\*\*After August 1981

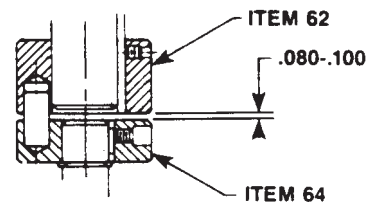


## BOLT TIGHTENING SEQUENCE



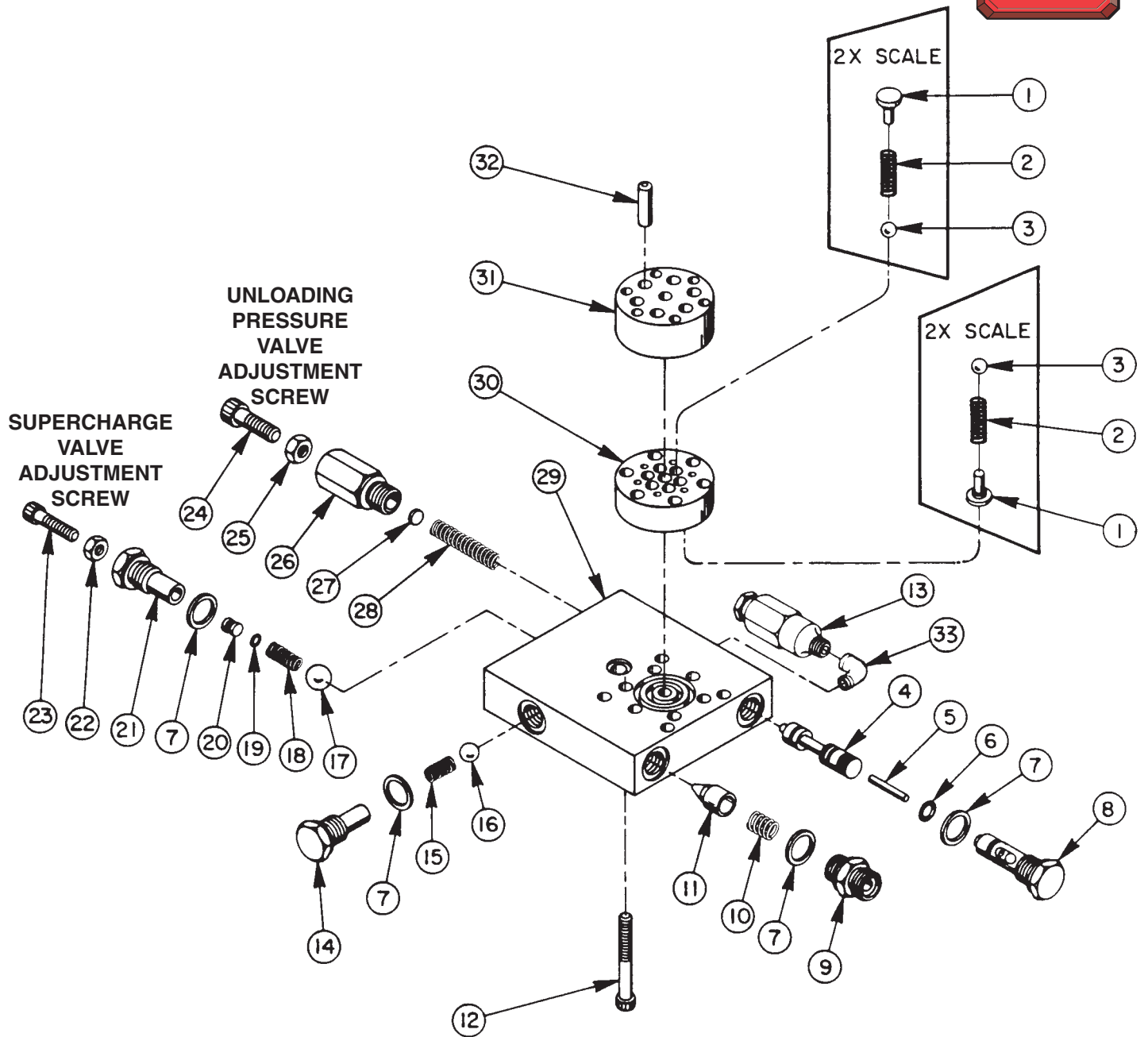
**NOTE:** All bolts must be torqued in sequence shown. Torque to 110/120 in. lbs. in increments of 50/60 in. lbs.

## COUPLING CLEARANCE



# HIGH PRESSURE PUMP ASSEMBLY

To Parts List



SEE DIAGRAM ON REVERSE SIDE FOR IMPORTANT ASSEMBLY INFORMATION

**Note: Supercharge Valve and Unloading Pressure Valve of the high pressure pump assembly are NOT factory set! They require adjustment at final pump assembly. Refer to the pump's hydraulic schematic for specifications.**

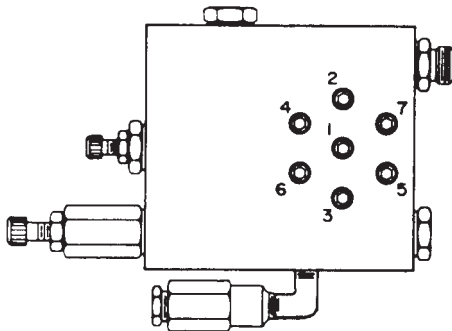
## Parts List, Form No. 101366, Back sheet 3 of 4

Item No.	Part No.	No. Req'd	Description	Item No.	Part No.	No. Req'd	Description
1	*24549	12	Valve Guide	17	10379	1	Steel Ball (1/2 Dia.)
2	*10445	12	Compression Spring (5/32 O.D. X 3/4 Lg.)	18	15319	1	Compression Spring (1/4 O.D. X 3/4 Lg.)
3	*12223	12	Steel Ball (3/16 Dia.)	19	12099	1	O-ring (9/32 X 5/32 X 1/16)
4	200273	1	Spool	20	200271	1	Adapter
5	16471	1	Dowel Pin (1/8 X 1" Lg.)	21	200270	1	Fitting, Super charge (Torque to 30/35 ft. lbs.)
6	14763	1	O-ring (7/16 X 5/16 X 1/16)	22	10383	1	Finished Jam Nut (1/4-20)
7	10261	4	Copper Washer (3/4 X 19/32 X 1/32)	23	10016	1	Soc. Hd. Cap Screw (1/4-20 X 1" Lg.)
8	202561	1	Adapter, Actuating Pin (Torque to 30/35 ft. lbs.)	24	10809	1	Soc. Hd. Cap Screw (5/16-18 X 1" Lg.)
9	20770	1	Connector (Torque to 30/35 ft. lbs.)	25	10385	1	Finished Jam Nut (5/16-18)
10	10425	1	Compression Spring (3/8 O.D. X 3/4 Lg.)	26	36545	1	Fitting, Unloading
11	20771	1	Poppet	27	16528	1	Disc
12	*15318	7	Soc. Hd. Cap Screw (1/4-28 X 2" Lg.; See diagram below)	28	203031	1	Compression Spring (.300 O.D. X 1-3/4 Lg.)
13	21278	1	Relief Valve Ass'y (Set at 11,500/12,000 PSI)	29	*50691	1	Valve Body
14	200269	1	Adapter Plug (Torque to 30/35 ft. lbs.)	30	*41048	1	Valve Head
15	11451	1	Compression spring (1/4 O.D. X 5/8 Lg.)	31	*41063	1	Pump Barrel
16	10378	1	Steel Ball (3/8 Dia.)	32	*21628	6	Piston (9/32 Dia.)
				33	13229	1	90° Elbow Fitting

Consult Factory when replacing items marked with an asterisk (\*).



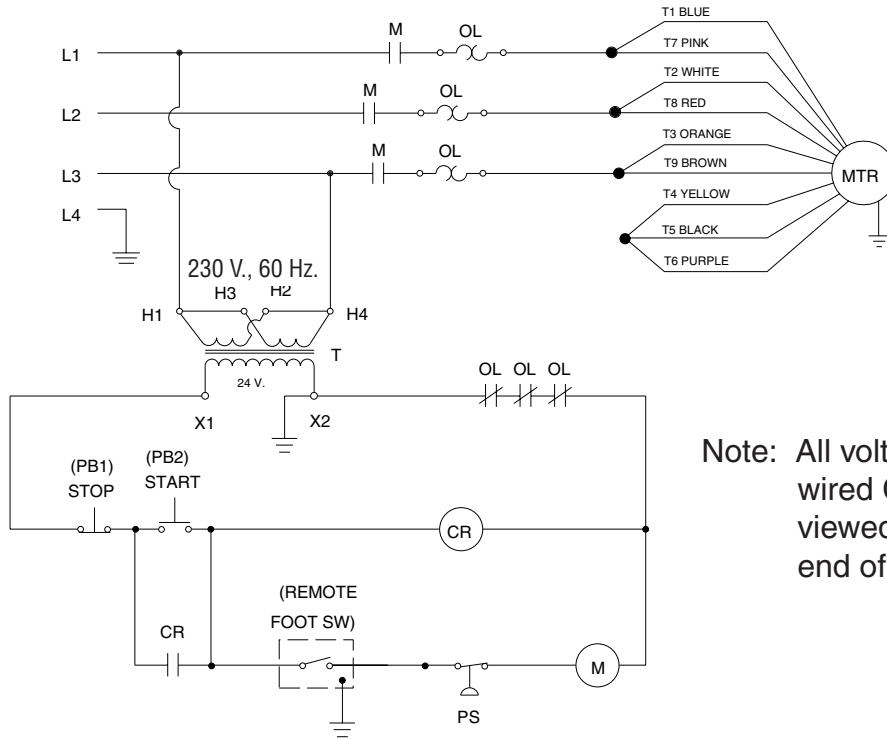
## BOLT TIGHTENING SEQUENCE



**NOTE: Assemble in sequence shown.  
Lubricate under head and on threads.  
Torque to 180 in. lbs.**

### ELECTRIC SCHEMATIC - 230 V. 60 Hz., Three Phase

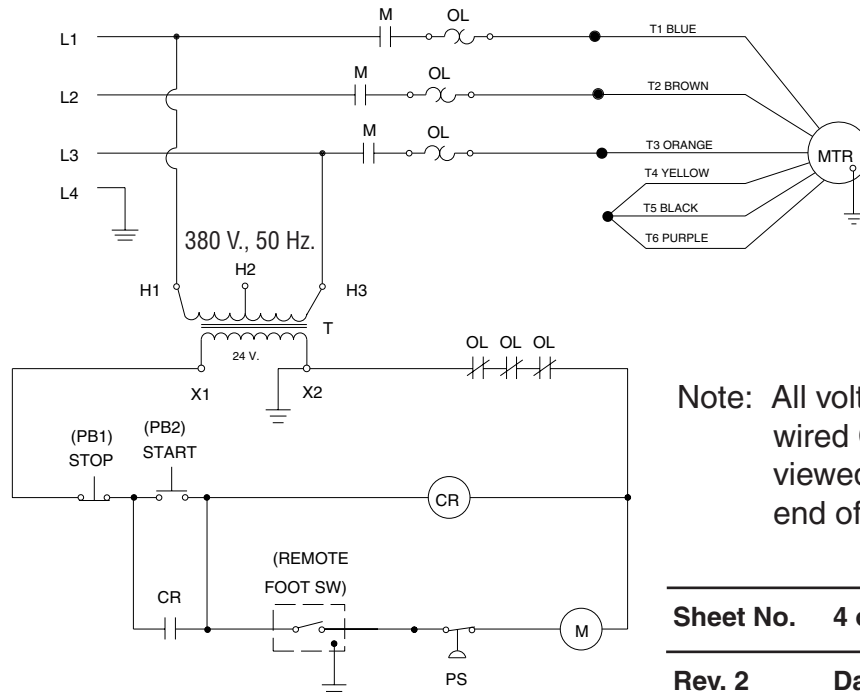
**! WARNING:** To help prevent personal injury, all electrical work must be done by a qualified electrician.



Note: All voltages must be wired CCW. Rotation viewed from lead end of motor.

### ELECTRIC SCHEMATIC - 380 V. 50 Hz., Three Phase

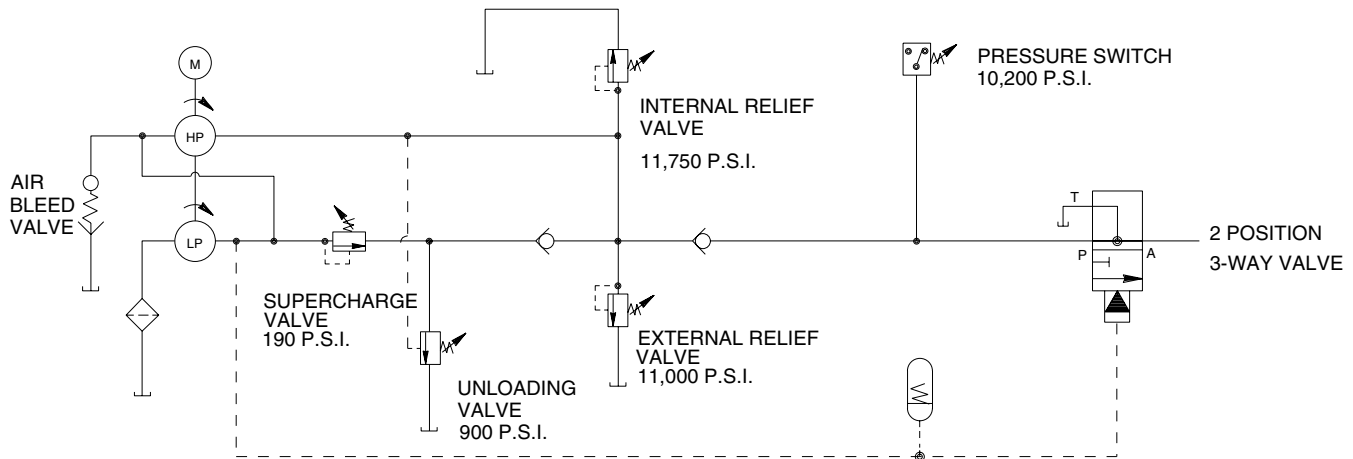
**! WARNING:** To help prevent personal injury, all electrical work must be done by a qualified electrician.



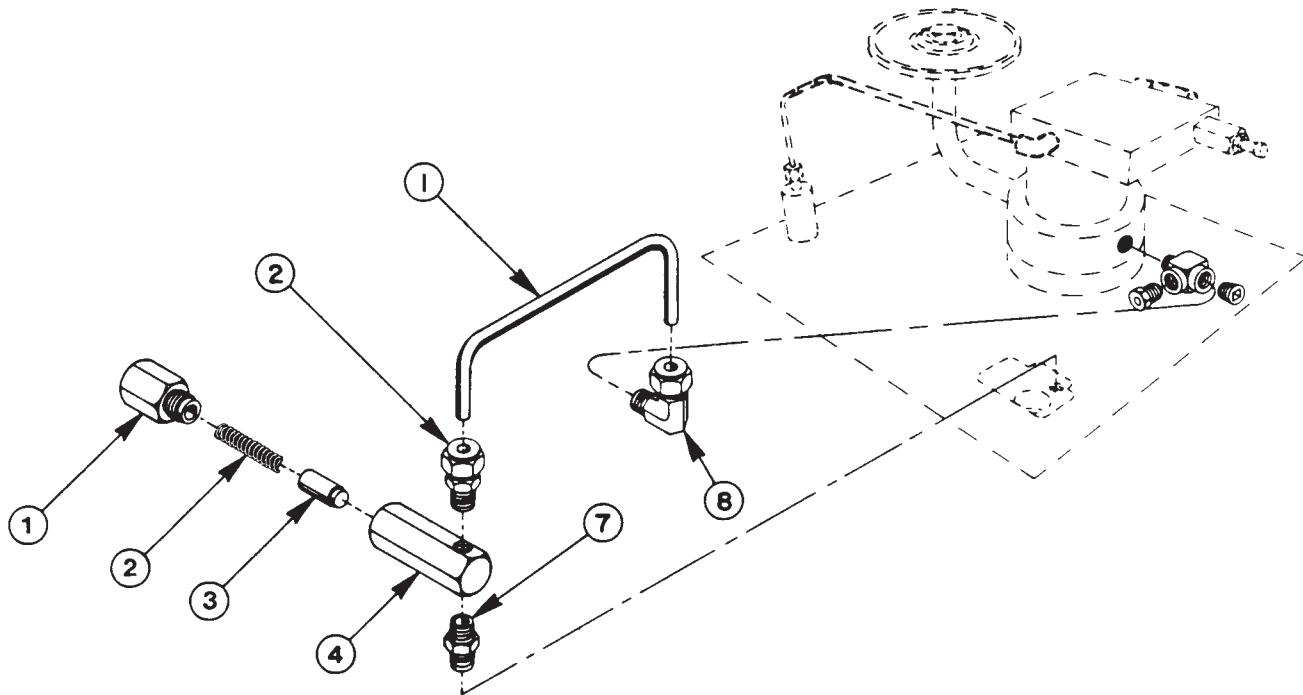
Note: All voltages must be wired CCW. Rotation viewed from lead end of motor.



## HYDRAULIC SCHEMATIC



## OPTIONAL PILOT OIL LINE/ACCUMULATOR ASSEMBLY



Item No.	Part No.	No. Req'd	Description
1	200405	1	Oil Line
2	11173	1	Connector
3	202121	1	Spring Retainer (Torque to 50/70 in. lbs.)
4	16499	1	Compression Spring
5	21945	1	Plunger
6	21944	1	Cylinder Body
7	11421	1	Pipe Nipple
8	11278	1	Connector
	21943	1	Accumulator (Consists of items 3,4,5, & 6)