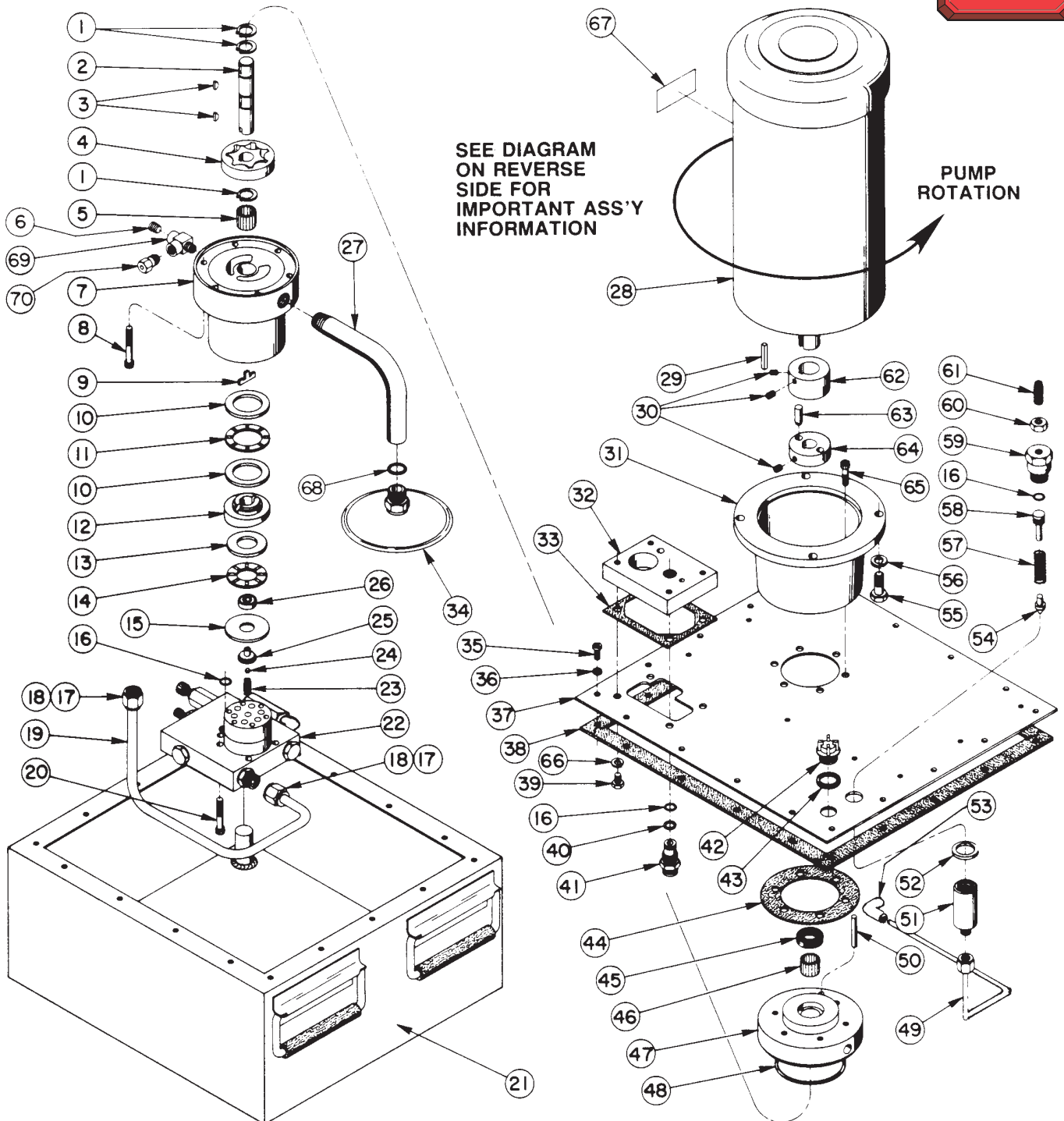


## MODEL C ELECTRIC TWO STAGE HYDRAULIC PUMP

To Parts List

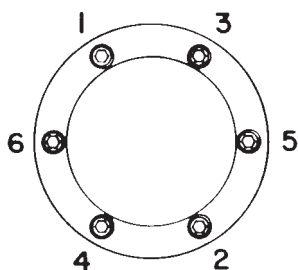


# Parts List, Form No. 101391, Back sheet 1 of 2

Item No.	Part No.	No. Req'd	Description	Item No.	Part No.	No. Req'd	Description
1	12178	3	Retaining Ring	40	11863	1	Backup Washer (1/2 X 3/8 X 1/16)
2	303009	1	Pump Shaft	41	20787	1	Connector
3	12179	2	Woodruff Key	42	20937	1	Filler Plug
4	15428	1	Gerotor Set	43	200415	1	Washer
5	15461	1	Needle Bearing	44	35266	1	Gasket
6	10427	1	Pipe Plug (1/8 NPTF)	45	12194	1	Seal
7	50705	1	Pump Housing	46	15430	1	Needle Bearing
8	10854	6	Soc. Hd. Cap Screw (1/4-20 X 1-3/4 Lg.; See Note Below)	47	50706	1	Gerotor Pump Housing
9	200397	1	Key	48	12504	1	O-ring (3" X 2-13/16 X 3/32)
10	11227	2	Needle Thrust Race	49	350524	1	Oil Line Ass'y with Fittings (3/16 Dia.)
11	11228	1	Needle Thrust Bearing	50	13152	1	Dowel Pin (3/16 X 1-1/2 Lg.)
12	35271	1	Angle Plate	51	22361	1	Body
13	15432	1	Needle Thrust Race	52	14857	1	Flat Washer (.062 Thk.)
14	15431	1	Needle Thrust Bearing	53	16177	1	90° Elbow Fitting
15	23548	1	Top Plate	54	21046	1	Valve Stem
16	10268	3	O-ring (1/2 X 3/8 X 1/16)	55	10049	4	Cap Screw (3/8-16 X 1" Lg.)
17	10430	2	Tube Sleeve	56	10247	4	Lockwasher
18	10431	2	Tube Nut	57	10495	1	Compression spring (1/2 O.D. X 1-5/8 Lg.)
19	35281	1	Oil Line (3/8 Dia.)	58	21306	1	Spring Guide
20	10022	5	Soc. Hd. Cap Screw (1/4-20 X 1-1/2 Lg.; Torque to 110/120 in. lbs.)	59	21305	1	Valve Cap
21	60234OR9	1	Reservoir	60	10386	1	Hex Nut (3/8-24)
22	41833	1	High Pressure Pump Ass'y (See sheet 2 of 2; Adjustment required)	61	22362	1	Valve Adjusting Screw
23	10361	1	Compression Spring (1/4 O.D. X 1" Lg.)	62	207440	1	Coupling
24	10375	1	Steel Ball (1/4 Dia.)	63	27003	2	Nylon Pin
25	23547	1	Top Bearing Plate	64	27001	1	Coupling
26	11814	1	Ball Bearing	65	10012	6	Cap Screw (1/4-20 X 7/8 Lg.; Torque to 110/120 in. lbs.)
27	204242	1	Tube Extension	66	10244	4	Lockwasher
28	*15437	1	Motor (3 H.P., 230/460V, 60 Hz)	67	204610	1	Motor Leads Decal (3 H.P., 230/460v, 60 Hz)
29	27778	1	Square Key	68	10527	1	O-ring (13/16 X .644 X .087)
30	10133	3	Soc. Hd. Set Screw (#10-24 X 1/4 Lg.)	69	18969	1	Tee Fitting
31	41838	1	Motor Mount	70	306957	1	Air Bleed Valve
32	43110	1	Valve Mounting Block	<b>PARTS INCLUDED BUT NOT SHOWN</b>			
33	200395	1	Gasket	202504	1	Rotation Decal	
34	21345	1	Filter Ass'y	204610	1	Motor Leads Decal	
35	16876	18	Mach. Screw (#10-24 X 1/2 Lg.)	9504	1	4-Way, 2 Position Manual Valve	
36	12356	18	Serrated Washer (#10 Internal)	<b>*When ordering Motor, order appropriate Motor Leads Decal (Item 67).</b>			
37	60922	1	Cover Plate (.164 Thk.)				
38	50712	1	Cover Gasket				
39	10005	4	Cap Screw (1/4-20 X 1/2 Lg.)				

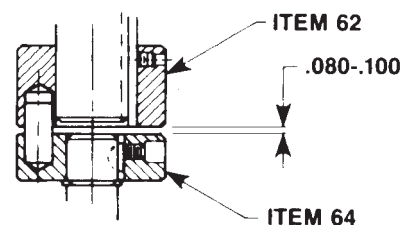


## BOLT TIGHTENING SEQUENCE



1. All bolt must be initially hand tightened in sequence shown (do not exceed 10 in. lbs.).
- 2.. All bolts must be torqued in sequence shown. Torque to 110/120 in. lbs. in increments of 50/60 in. lbs.

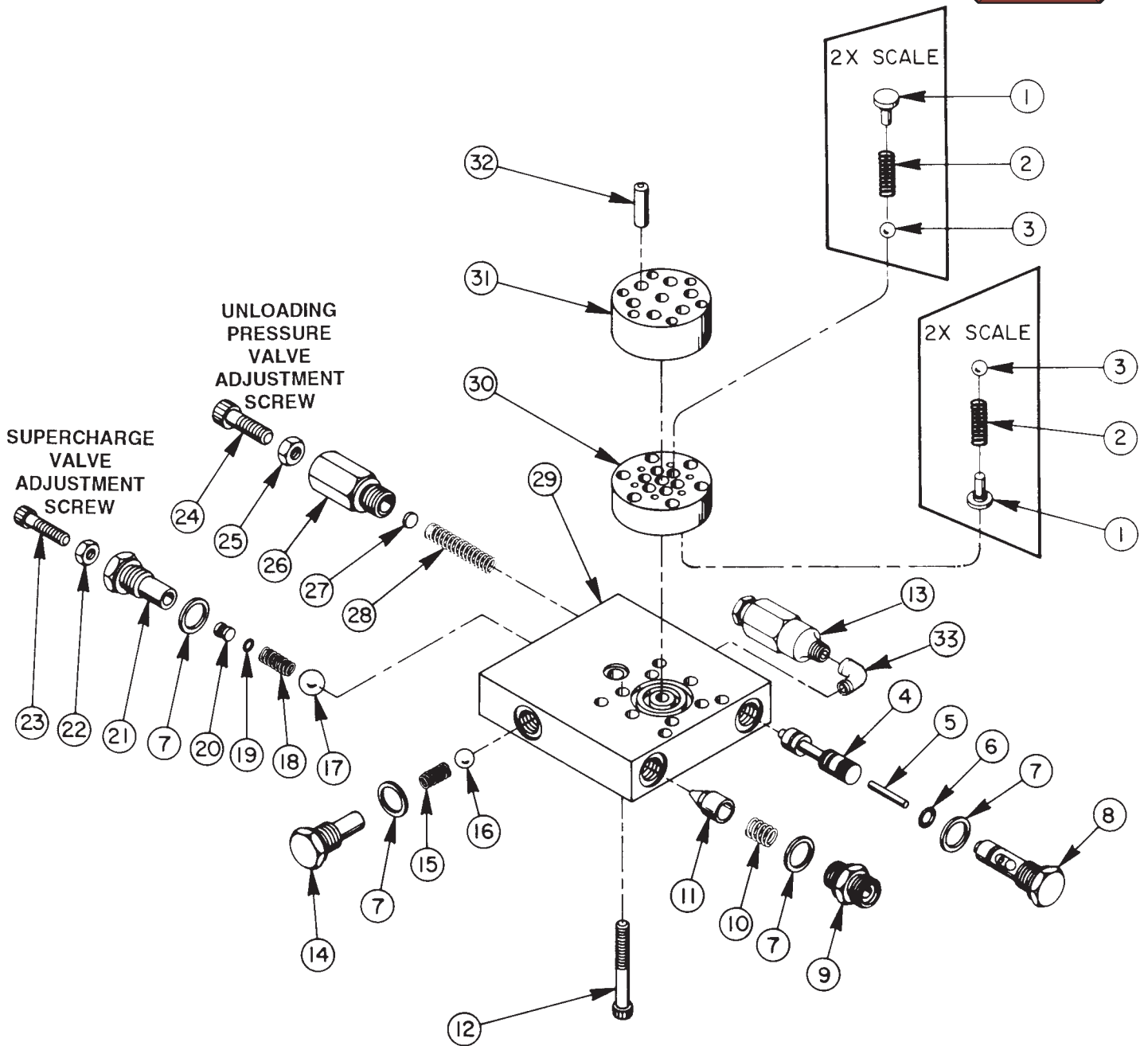
## COUPLING CLEARANCE



Note: Shaded areas reflect last revision(s) made to this form.



# HIGH PRESSURE PUMP ASSEMBLY



SEE DIAGRAM ON REVERSE SIDE FOR IMPORTANT ASSEMBLY INFORMATION

**Note: Supercharge Valve and Unloading Pressure Valve of the high pressure pump assembly are NOT factory set! They require adjustment at final pump assembly. Refer to the pump's hydraulic schematic for specifications.**

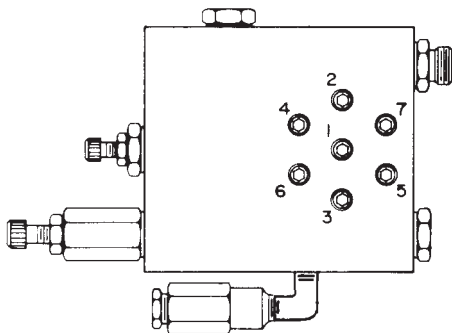
# Parts List, Form No. 101391, Back sheet 2 of 2

Item No.	Part No.	No. Req'd	Description	Item No.	Part No.	No. Req'd	Description
1	*24549	12	Valve Guide	17	10379	1	Steel Ball (1/2 Dia.)
2	*10445	12	Compression Spring (5/32 O.D. X 3/4 Lg.)	18	15319	1	Compression Spring (1/4 O.D. X 3/4 Lg.)
3	*12223	12	Steel Ball (3/16 Dia.)	19	12099	1	O-ring (9/32 X 5/32 X 1/16)
4	200273	1	Spool	20	200271	1	Adapter
5	16471	1	Dowel Pin (1/8 X 1" Lg.)	21	200270	1	Fitting, Super charge (Torque to 30/35 ft. lbs.)
6	14763	1	O-ring (7/16 X 5/16 X 1/16)	22	10383	1	Finished Jam Nut (1/4-20)
7	10261	4	Copper Washer (3/4 X 19/32 X 1/32)	23	10016	1	Soc. Hd. Cap Screw (1/4-20 X 1" Lg.)
8	202561	1	Adapter, Actuating Pin (Torque to 30/35 ft. lbs.)	24	10809	1	Soc. Hd. Cap Screw (5/16-18 X 1" Lg.)
9	20770	1	Connector (Torque to 30/35 ft. lbs.)	25	10385	1	Finished Jam Nut (5/16-18)
10	10425	1	Compression Spring (3/8 O.D. X 3/4 Lg.)	26	36545	1	Fitting, Unloading
11	20771	1	Poppet	27	16528	1	Disc
12	*15318	7	Soc. Hd. Cap Screw (1/4-28 X 2" Lg.; See diagram below)	28	203031	1	Compression Spring (.300 O.D. X 1-3/4 Lg.)
13	21278	1	Relief Valve Ass'y (Set at 10,100/10,700 PSI)	29	*50691	1	Valve Body
14	200269	1	Adapter Plug (Torque to 30/35 ft. lbs.)	30	*41048	1	Valve Head
15	11451	1	Compression spring (1/4 O.D. X 5/8 Lg.)	31	*41063	1	Pump Barrel
16	10378	1	Steel Ball (3/8 Dia.)	32	*21628	6	Piston (9/32 Dia.)
				33	13229	1	90° Elbow Fitting

Consult Factory when replacing items marked with an asterisk (\*).



## HIGH PRESSURE PUMP BOLT TIGHTENING SEQUENCE



**NOTE: Assemble in sequence shown.  
Lubricate under head and on threads.  
Torque to 180 in. lbs.**

Refer to any operating instructions included with this product for detailed information about operation, testing, disassembly, reassembly, and preventive maintenance.

Items found in this parts list have been carefully tested and selected. **Therefore: Use only genuine Power Team replacement parts!**

Additional questions can be directed to our Technical Services Department.