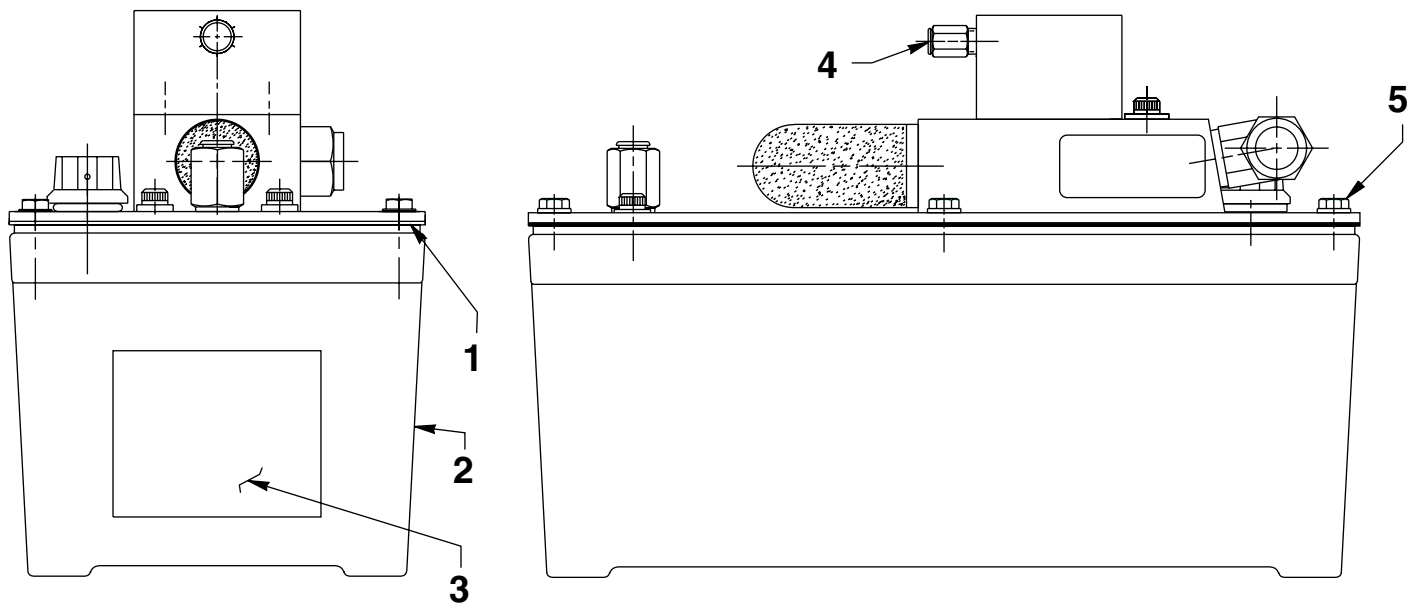


**MODEL F  
AIR HYDRAULIC PUMP  
Max. Capacity: 10,000 PSI (700 Bar)**

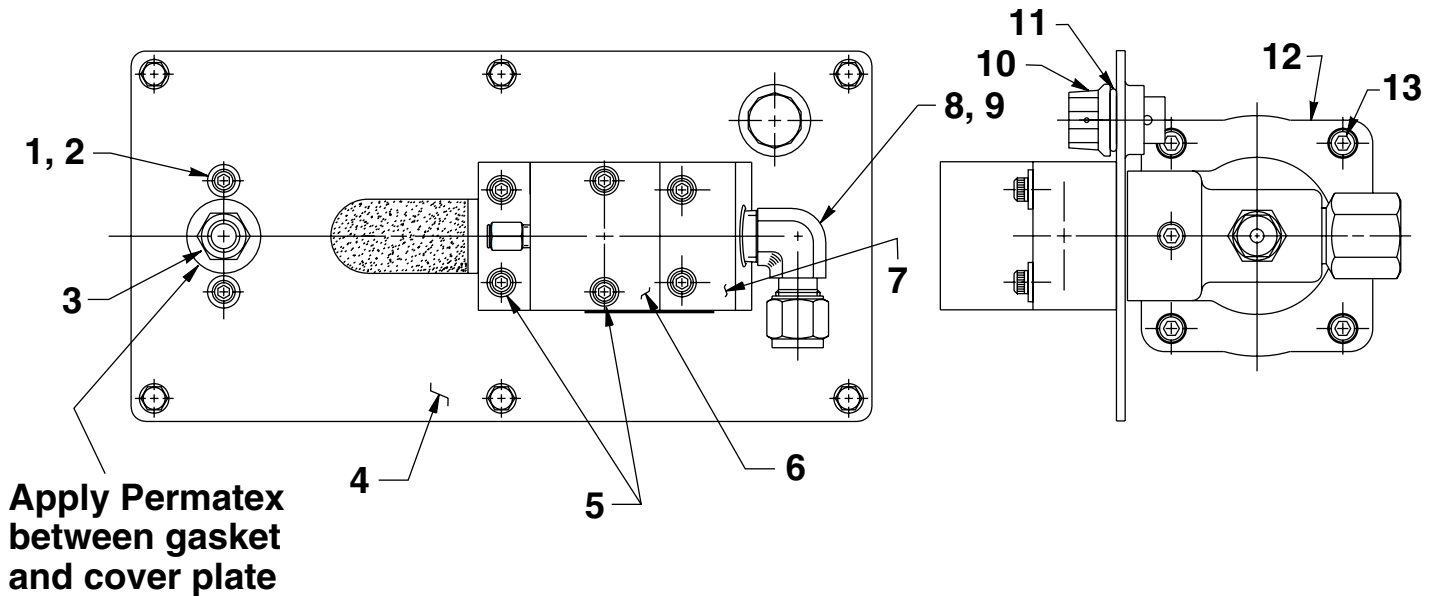
Item No.	Part No.	No. Req'd	Description
1	*33853	1	Reservoir Gasket
2	61243	1	Reservoir
3	*305494	1	Decal
4	251053	1	Straight Fitting
5	211060	6	Hex Washer Hd Screw (#9-15 X 1" Lg.; Torque to 25/35 in. lbs.)

**PARTS INCLUDED BUT NOT SHOWN**

211060	4	Hex Washer Hd Screw (#9-15 X 1" Lg.; For pump mounting purposes only)
--------	---	--

Part numbers marked with an asterisk (\*) are contained in Repair Kit No. 300838.

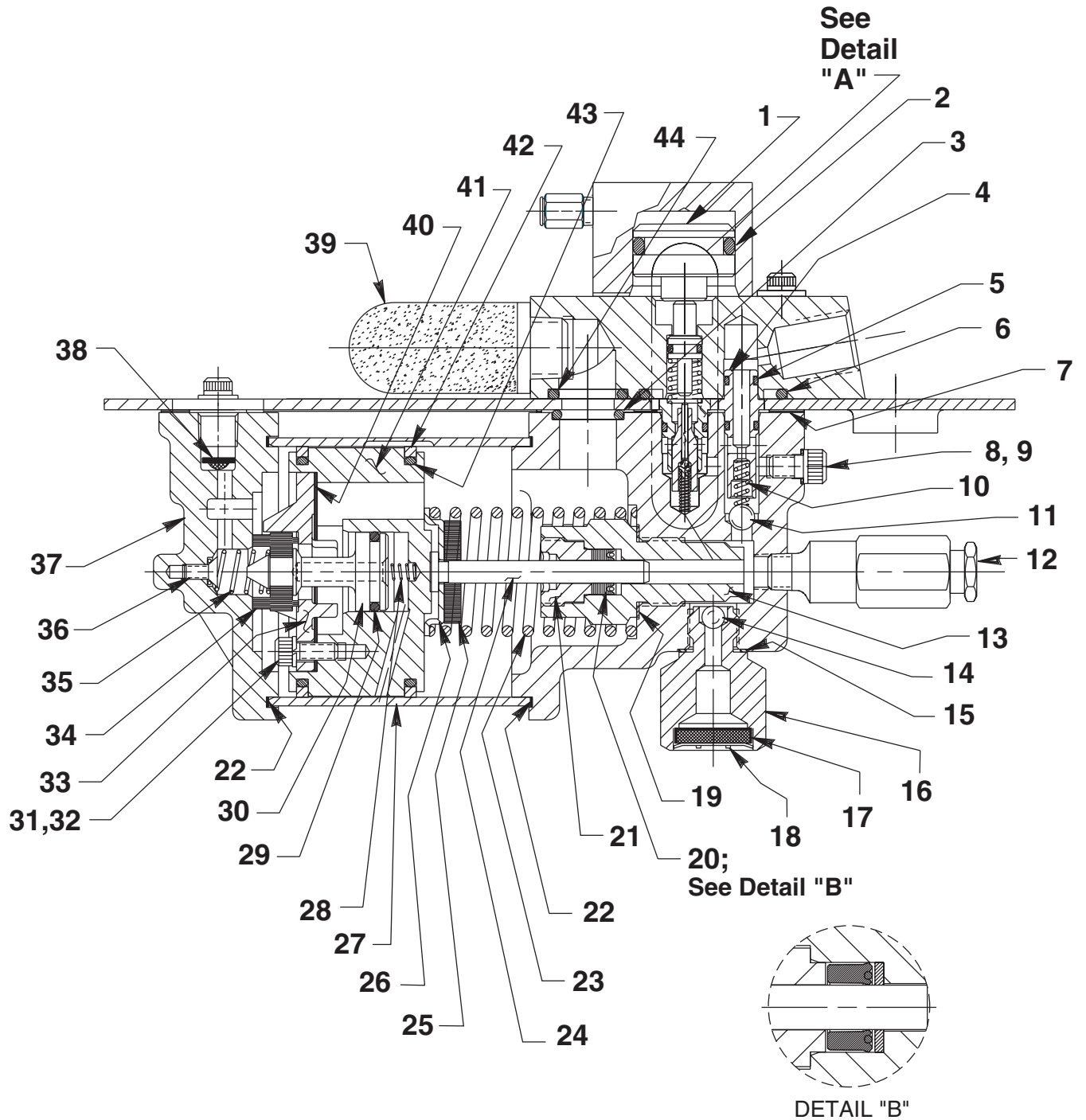
TOP AND END VIEW



Item No.	Part No.	No. Req'd	Description
1	11434	2	Soc. Hd. Cap Screw (10-24 UNC X 1/2 Lg.)
2	11089	2	Washer (#10 bolt)
3	251054	1	Straight Fitting
4	420965BK2	1	Cover Plate
5	11151	6	Soc. Hd. Cap Screw (10-24 UNC X 1-1/4" Lg.; Torque to 50/60 in. lbs.)
6	420293	1	Valve Body
7	58685	1	Release Valve Body
8	251055	1	Elbow
9	209128	1	Plastic Cap
10	251689	1	Filler/Breather Cap
11	*10273	2	O-ring (13/16 X 5/8 X 3/32; Nitrile)
12	64767	1	Pump Body
13	17428	4	Soc. Hd. Cap Screw (1/4-20 UNC X 3-1/2" Lg.; Torque to 85/95 in. lbs. oiled; NOTE: Cross torque in increments of 30 in. lbs.)

Part numbers marked with an asterisk (\*) are contained in Repair Kit No. 300838.

# BASIC PUMP ASSEMBLY



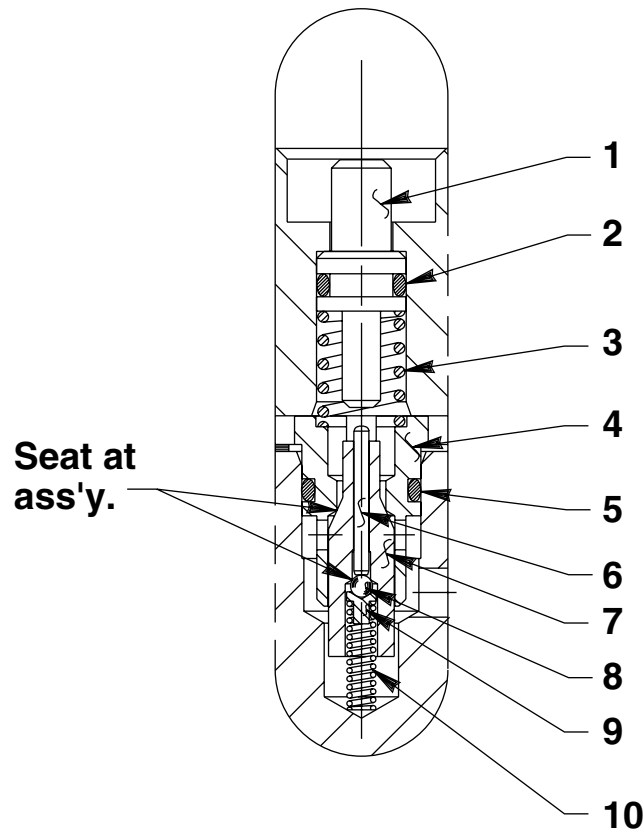
# Parts List, Form No. 101638, Back sheet 2 of 3

Item No.	Part No.	No. Req'd	Description
1	<b>34757</b>	1	Piston Release
2	* <b>208144</b>	1	O-ring (1-1/8" X 7/8 X 1/8; Apply Lubricant)
3	* <b>10272</b>	1	O-ring (3/4 X 9/16 X 3/32; Nitrile)
4	<b>34378</b>	1	Check Valve Body
5	* <b>12522</b>	2	O-ring (3/8 X 1/4 X 1/16; Urethane)
6	* <b>11841</b>	1	O-ring (1-5/8" X 1-3/8" X 1/8; Nitrile)
7	* <b>351021</b>	1	Gasket
8	* <b>10442</b>	1	Washer (3/8 X 1/4 X 1/32)
9	<b>10002</b>	1	Soc. Hd. Cap Screw (1/4-20 UNC X 3/8 Lg.; Torque to 90/110 in. lbs.)
10	* <b>10445</b>	1	Compression Spring (5/32 O.D. X 3/4 Lg.)
11	* <b>10423</b>	1	Steel Ball (9/32 Dia.)
12	<b>21278</b>	1	Relief Valve (Apply loctite 592 [Power Team #905516] or equiv. & torque to 150/170 in. lbs.)
13	<b>45278</b>	1	Piston Cylinder (Torque to 90/100 ft. lbs. oiled)
14	* <b>10375</b>	1	Steel Ball (1/4 Dia.)
15	* <b>10261</b>	1	Copper Washer (3/4 X 19/32 X 1/32)
16	<b>308893</b>	1	Filter Adapter
17	<b>214578</b>	1	Filter
18	<b>214586</b>	1	Internal Retaining Ring
19	* <b>10263</b>	1	Copper Washer (1" X .765 X 1/32)
20	* <b>13934</b>	1	U-cup & Backup
21	* <b>304295</b>	1	Retainer (Note: See "INSTRUCTIONS FOR RETAINER REPLACEMENT" on back sheet 3 of 3.)
22	* <b>17429</b>	2	Back-up Ring (2-15/16" X 2-3/4" X .045)
23	* <b>13938</b>	1	Compression Spring (1.452 O.D. X 4-7/16" Lg.)
24	<b>28226</b>	1	Piston
25	<b>203143</b>	1	Bumper
26	<b>210994</b>	1	Spring Guide
27	<b>37434</b>	1	Air Cylinder (NOTE: Locate groove on upper half (top) of pump with chamfered tube end towards rear head as shown.)
28	* <b>12692</b>	1	Compression Spring (3/16 O.D. X 1-11/16" Lg.)
29	* <b>211052</b>	1	O-ring (.900 X .706 X .097; Nitrile)
30	<b>305475</b>	1	Exhaust Valve Stem
31	* <b>10241</b>	3	Lockwasher (For #10 bolt)
32	<b>211054</b>	3	Screw (#10-24 X 1/2 Lg.; Torque to 50/55 in. lbs.)
33	<b>33822</b>	1	Piston End Plate
34	* <b>28183</b>	1	Piston Poppet
35	* <b>205679</b>	1	Compression Spring (.485 O.D. X .915 Lg.)
36	* <b>205674</b>	1	Hex Soc. Flat Hd. Cap Screw (8-32 UNC X 3/8 Lg.; Torque to 12/18 in. lbs.)
37	<b>37468</b>	1	Rear Head
38	* <b>216296</b>	1	Filter Disc
39	* <b>250461</b>	1	Muffler
40	* <b>28239</b>	1	Gasket
41	<b>52390</b>	1	Piston Body
42	* <b>14265</b>	2	Piston Ring
43	* <b>251835</b>	2	O-ring (2-1/2" X 2-5/16" X 3/32; Nitrile)
44	* <b>10276</b>	1	O-ring (1" X 3/4 X 1/8; Nitrile)



Part numbers marked with an asterisk (\*) are contained in Repair Kit No. 300838.

## DETAIL "A"



Item No.	Part No.	No. Req'd	Description
1	28227	1	Release Valve Button
2	*10266	1	O-ring (3/8 X 1/4 X 1/16; Nitrile)
3	*13944	1	Spring
4	34377	1	Poppet Retainer
5	*15279	1	O-ring (1/2 X 3/8 X 1/16; Nitrile)
6	13937	1	Dowel Pin (NOTE: Place tapered end toward ball.)
7	29037	1	Release Valve Body
8	*14443	1	Steel Ball (3/32 Dia.)
9	209736	1	Ball Retainer
10	*13959	1	Compression Spring (1/8 O.D. X 1/2 Lg.)

Part numbers marked with an asterisk (\*) are contained in Repair Kit No. 300838.

Refer to any operating instructions included with this product for detailed information about operation, testing, disassembly, reassembly, and preventive maintenance.

Items found in this parts list have been carefully tested and selected. **Therefore: Use only genuine Power Team replacement parts!**

Additional questions can be directed to our Technical Services Department.

## INSTRUCTIONS FOR RETAINER REPLACEMENT

Your pump's retainer is locked into place by one of the two following methods. Determine which method was used on your pump's retainer, then follow the appropriate steps to remove the old and install and stake the new.

### Method 1 - Retainer shows no sign of stake marks

1. This retainer has been locked in place with a Loctite product. To replace it, a moderate amount of heat needs to be applied to the cylinder nut (in the area of the retainer) to soften the existing Loctite allowing it to be removed.
2. Install the new retainer into the cylinder nut and torque to 80/100 in. lbs. **Note: Do not use a Loctite product this time but stake the new retainer in place according to instructions in Step 3.**
3. To lock retainer into place, use a center punch positioned in the seam between the retainer and the cylinder nut and stake the new retainer in two places approximately 180° apart.

### Method 2 - Retainer has two stake marks in the seam between the retainer and the cylinder nut

1. For replacement of this retainer, the stake marks must be removed. Using a 1/8" or larger diameter drill bit, remove the existing stakes by drilling a short distance into the stake marks. Remove the retainer.
2. Install the new retainer into the cylinder nut and torque to 80/100 in. lbs.
3. To lock retainer into place, use a center punch positioned in the seam between the retainer and the cylinder nut and stake the new retainer in two places approximately 180° apart.

**NOTE: Do not stake in the old stake marks.**

