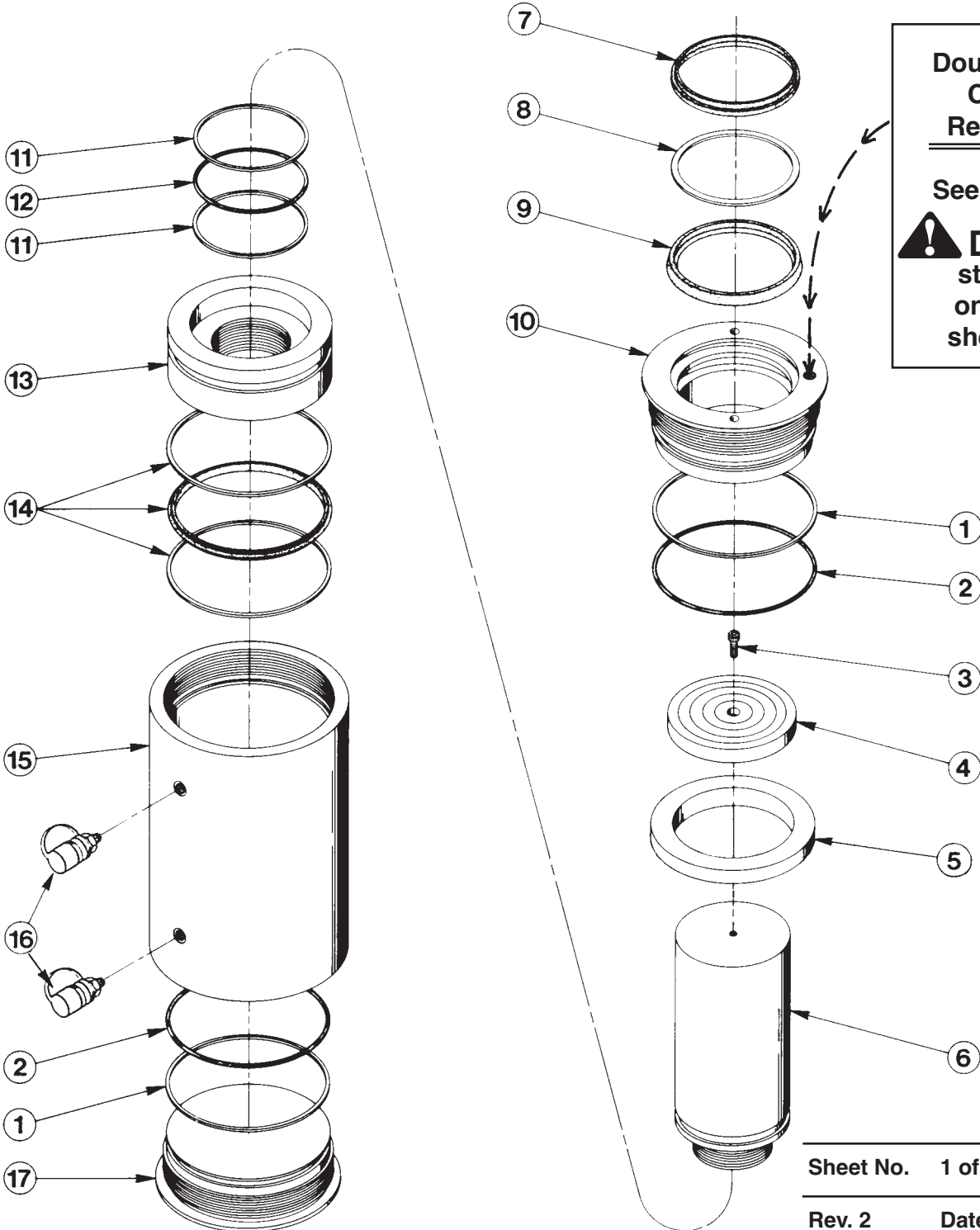


**MODEL B  
DOUBLE-ACTING  
HYDRAULIC CYLINDER**  
Max. Capacity: 300.7 Tons at 10,000 PSI

To Parts List



**Double-acting  
Cylinder  
Relief Valve**

See important  
**DANGER**  
statement  
on back of  
sheet 1 of 1



**DANGER:** To help avoid possible serious personal injury or death,

- In the event that the cylinder retract port is ever restricted or plugged, a double-acting cylinder relief valve will help prevent excessive pressure from building in the cylinder. **DO NOT** attempt to adjust or service this relief valve! If oil leakage is detected from this relief valve, discontinue use of the cylinder immediately and contact Power Team Technical Services. Only Power Team Authorized Service Centers should service this relief valve.

Item No.	Part No.	No. Req'd	Description
1	*212692	2	Backup Washer ((8-3/4 x 8-1/4" x 3/32)
2	*212691	2	O-ring (8-1/2 x 8 x 1/4)
3	252356	1	Cap Screw (3/8-16 x 5-1/2" Lg.)
4	421392	1	Piston Rod Cap
5	47489	1	Spacer (For models with 24" stroke or more)
	47816	1	Spacer (For RD30048B)
†6	58864-" "	1	Piston Rod
7	*212697	1	Rod Wiper
8	*212696	1	Backup Washer (7" x 6-1/4 x 1/8)
9	*212695	1	U-cup
10	61432	1	Piston Retainer (Torque to 650 ft. lbs.)
11	*212694	2	Backup Washer (6-1/4 x 5-3/4 x 3/32)
12	*212693	1	O-ring (6-1/4 x 5-3/4 x 1/4)
13	52728	1	Piston Head
14	*212698	1	T-seal & Backup Rings
†15	58865-" "	1	Cylinder Body
16	9796	2	Quick Coupler With Dust Cap
17	58866	1	Retainer Nut (Torque to 650 ft. lbs.)



**PARTS INCLUDED BUT NOT SHOWN**

*37782	1	Warning Decal
351366	1	Trade Name Decal
52723	1	Handle Assembly (For all models except RD30048B)
52723	2	Handle Assembly (For RD30048B)

Items marked with an asterisk (\*) are contained in Repair Kit No. 300466.

† To order the correct piston rod and cylinder body for your specific model, list the stroke length as a suffix to the item part number.

For example: 58864-6 = 6" stroke  
 58864-13 = 13" stroke  
 OR  
 58865-30 = 30" stroke  
 58865-48 = 48" stroke

Refer to any operating instructions included with this product for detailed information about operation, testing, disassembly, reassembly, and preventive maintenance.

Items found in this parts list have been carefully tested and selected. **Therefore: Use only genuine Power Team replacement parts!**

Additional questions can be directed to our Technical Service Department.