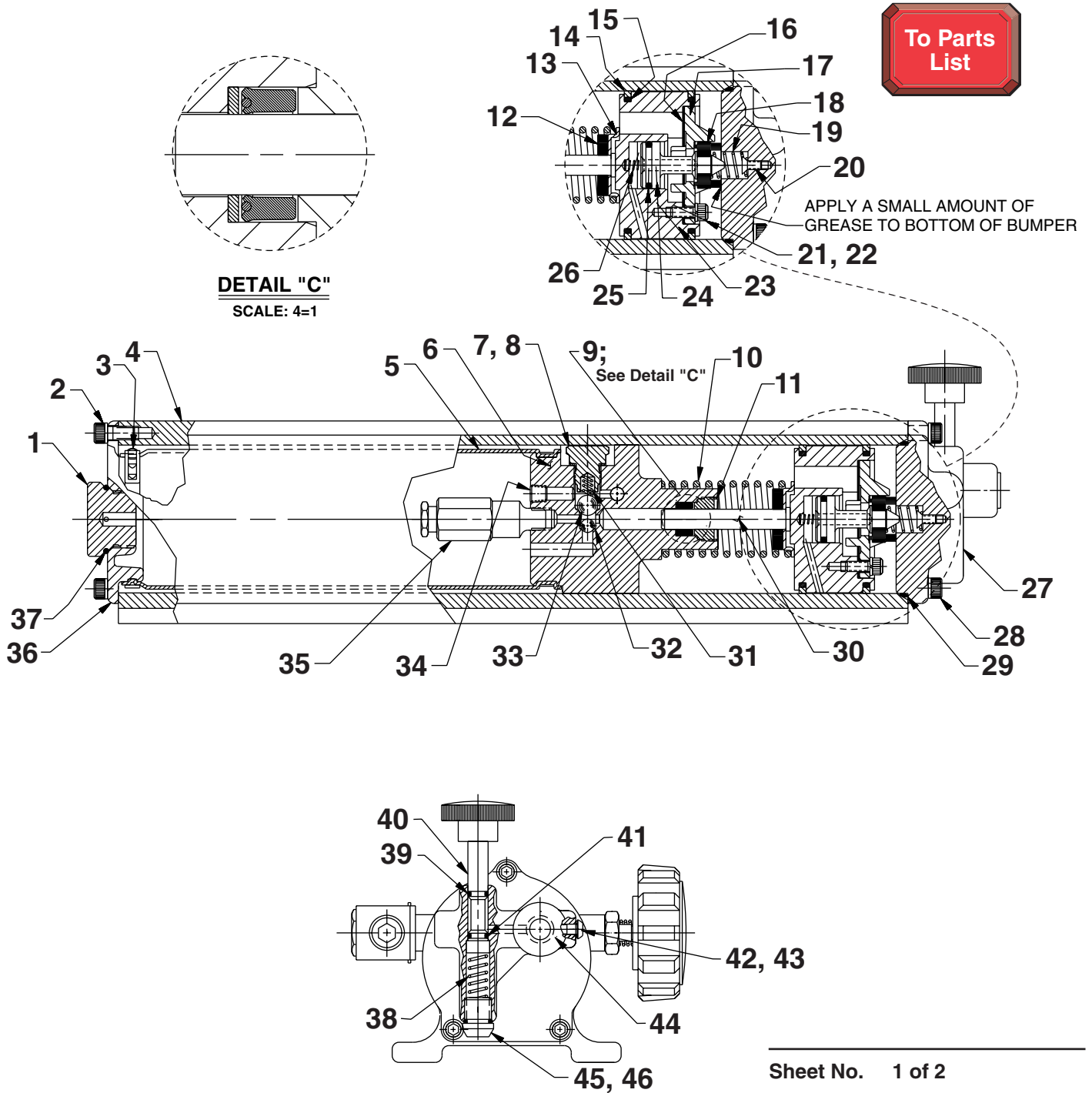


## MODEL C AIR/HYDRAULIC PUMP TUBE STYLE



### END VIEW

# Parts List, Form No. 101938, Back sheet 1 of 2

Item No.	Part No.	No. Req'd	Description
1	<b>252298</b>	1	Plug, Filler
2	<b>10807</b>	3	Screw, Socket HD (1/4-20 x 1/2; Torque to 60/80 in. lbs.)
3	* <b>252303</b>	2	Clamp
4	<b>65695</b>	1	Housing, Pump
5	* <b>421332</b>	.50	Bladder (Cut to 8.280 / 8.220 Lg.)
6	<b>65542</b>	1	Body, Pump
7	<b>351394</b>	1	Screw, Valve (1/2-20 x 25/32 Lg.; Torque to 380/400 in. lbs.)
8	* <b>14874</b>	1	Washer, Copper (.70 x .50)
9	* <b>252373</b>	1	U-cup & Backup (.375)
10	* <b>13938</b>	1	Spring (1.45 OD x 4.4 x .12 WS)
11	* <b>351801</b>	1	Retainer (Note: See "INSTRUCTIONS FOR RETAINER REPLACEMENT" on back sheet 2 of 2.)
12	* <b>252371</b>	1	Bumper
13	<b>252370</b>	1	Guide, Spring
14	* <b>14265</b>	2	Ring, Piston (2.77 x 2.54)
15	* <b>251835</b>	2	O-ring (2.50 x 2.31 Nitrile)
16	* <b>28239</b>	1	Gasket
17	<b>33822</b>	1	Casting, Piston End Plate
18	* <b>28183</b>	1	Poppet, Piston
19	* <b>205679</b>	1	Spring (.49 OD x .92 x .04 WS)
20	<b>205674</b>	1	Screw, Flat HD (8-32 x 3/8; Torque to 12/18 in. lbs.)
21	<b>211054</b>	3	Screw, Socket HD (10-24 x 1/2; Torque to 50/55 in. lbs.)
22	<b>10241</b>	3	Washer, Lock (.33 x .20)
23	<b>52390</b>	1	Body, Piston
24	<b>305475</b>	1	Stem, Exhaust Valve
25	* <b>211052</b>	1	O-ring (.90 x .70 Nitrile)
26	* <b>12692</b>	1	Spring (.18 OD x 1.70 x .02 WS)
27	<b>58901</b>	1	Head, Rear
28	<b>10008</b>	3	Screw, Socket HD (1/4-20 x 3/4.; Torque to 120/140 in. lbs.)
29	* <b>252349</b>	1	O-ring (2.75 x 2.65 Nitrile)
30	<b>252372</b>	1	Piston (3/8")
31	* <b>10444</b>	1	Spring (.25 OD x .41 x .02 WS)
32	* <b>10375</b>	1	Ball (1/4" Dia., Steel; Seat at assembly)
33	* <b>10378</b>	1	Ball (3/8" Dia., Steel; Seat at assembly)
34	<b>11084</b>	1	Fitting, Plug (1/16 NPTF)
35	<b>21278-35</b>	1	Valve, Relief (Set at 3,500/3,800 PSI)
36	<b>351409</b>	1	Cap, End Filler
37	* <b>16684</b>	1	O-ring (1.18 x 1.00 Nitrile)
38	<b>253479</b>	1	Spring (.36 OD x 1.00 x .05 WS)
39	* <b>10266</b>	1	O-ring (.37 X .25 Nitrile; Apply a small amount of grease at assembly.)
40	<b>351345</b>	1	Stem, Valve
41	* <b>12522</b>	1	O-ring (.37 X .25 Urethane; Apply a small amount of grease at assembly.)
42	<b>251486</b>	1	Screw, Button Hd (10-24 x 1/2; Torque to 45/55 in. lbs.)
43	<b>14319</b>	1	Washer, Special (.31 x .19)
44	<b>14794</b>	1	Cap, Plastic
45	<b>250258</b>	1	Screw (1/2-13 x 1/2 Lg.; Apply Loctite 277 or equiv. Cure one hour before testing.)
46	<b>15279</b>	1	O-ring (.50 x .37 Nitrile)

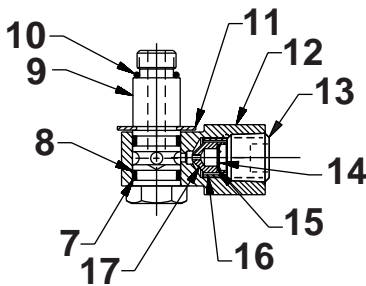
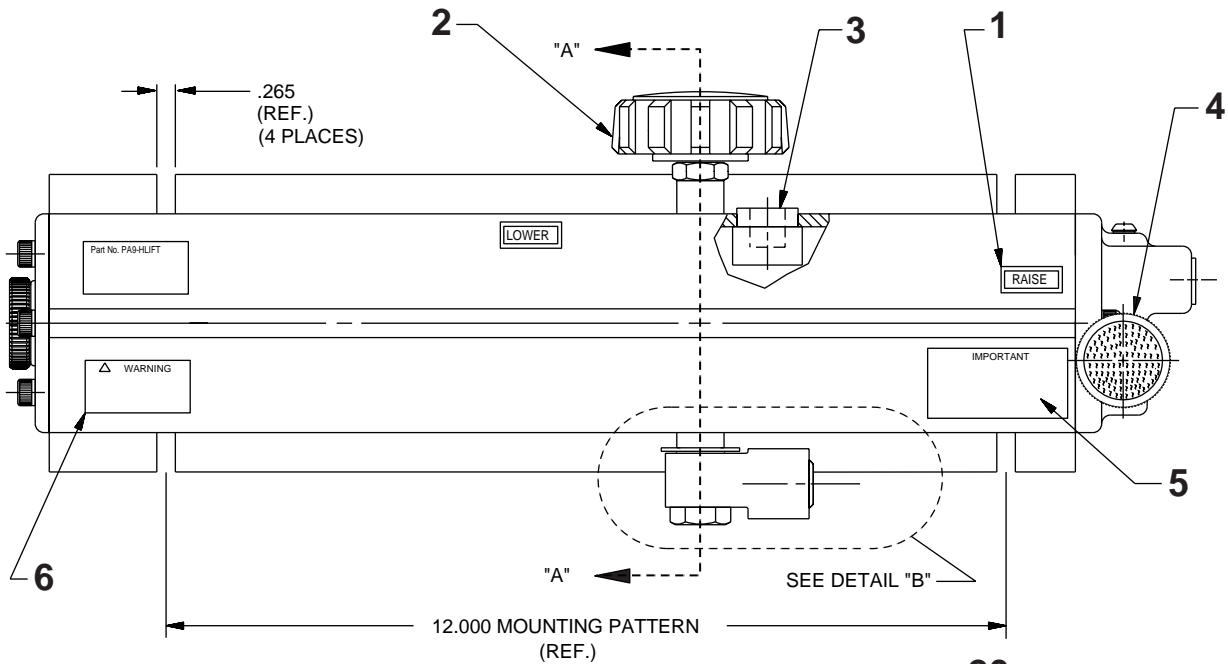
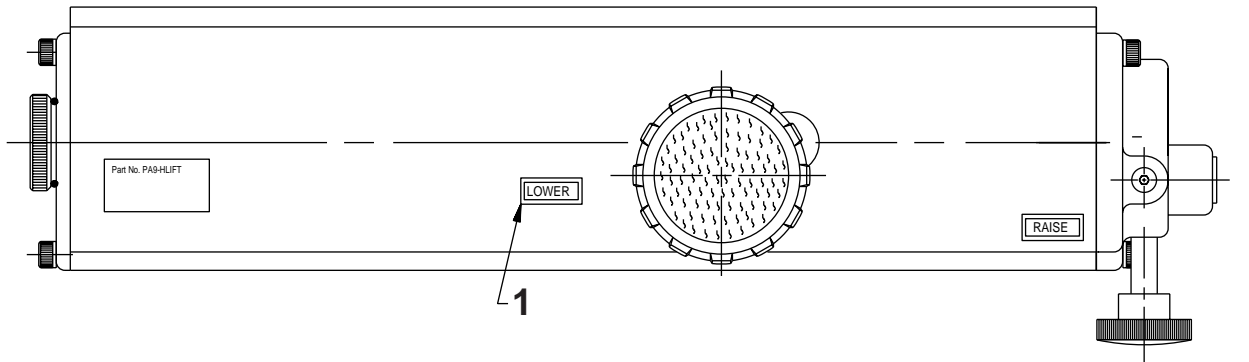
Part numbers marked with an asterisk (\*) are contained in Repair Kit No. 300981.



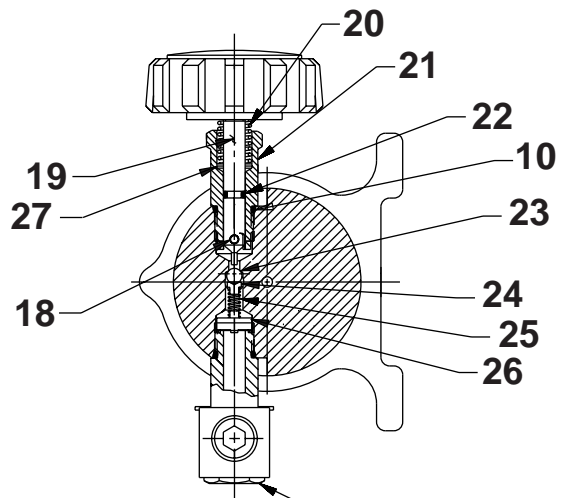
Note: Shaded areas reflect last revision(s) made to this form.



### TOP & SIDE VIEWS



**DETAIL "B"**



**SECTION "A-A"**

Item No.	Part No.	No. Req'd	Description
1	253293	1	Decal, Raise & Lower
2	351368	1	Knob
3	*252300	2	Muffler
4	351346	1	Knob
5	14350	1	Decal, Caution
6	222142	1	Decal, Warning
7	*12391	1	Washer, Backup (.69 x .56)
8	*11284	2	O-ring (.68 x .56 Nitrile)
9	351375	1	Fitting, Swivel
10	*10300	2	O-ring (.62 X .46 Nitrile)
11	11902	1	Ring, Retain Ext (0.57 x .050)
12	351450	1	Block, Swivel
13	16232	1	Fitting, Plug (3/8 NPTF)
14	214596	1	Disc, Filter
15	12201	1	Ring, Retain Int (0.18 x .010)
16	253643	1	Retainer, Poppet

Item No.	Part No.	No. Req'd	Description
17	252191	1	Poppet
18	10796	1	Pin, Dowel (.13 x .50)
19	252535	1	Pin, Release
20	253223	1	Spring (.49 OD x 1.00 x .07 WS)
21	351413	1	Cam, Pivot (Torque to 280/300 in. lbs.)
22	*10265	1	O-ring (.31 x .18 Nitrile)
23	*10374	1	Ball (7/32" Dia., Steel; Seat at assembly)
24	252856	1	Guide, Ball
25	*14282	1	Spring (.18 OD x .50 x .02 WS)
26	252445	1	Guide, Spring
27	253663	2	Washer



Part numbers marked with an asterisk (\*) are contained in Repair Kit No. 300981.

## INSTRUCTIONS FOR RETAINER REPLACEMENT

Your pump's retainer is locked into place by one of the two following methods. Determine which method was used on your pump's retainer, then follow the appropriate steps to remove the old and install and stake the new.

### Method 1 - Retainer shows no sign of stake marks

1. This retainer has been locked in place with a Loctite product. To replace it, a moderate amount of heat needs to be applied to the cylinder nut (in the area of the retainer) to soften the existing Loctite allowing it to be removed.
2. Install the new retainer into the cylinder nut and torque to 80/100 in. lbs. **Note: Do not use a Loctite product this time but stake the new retainer in place according to instructions in Step 3.**
3. To lock retainer into place, use a center punch positioned in the seam between the retainer and the cylinder nut and stake the new retainer in two places approximately 180° apart.

### Method 2 - Retainer has two stake marks in the seam between the retainer and the cylinder nut

1. For replacement of this retainer, the stake marks must be removed. Using a 1/8" or larger diameter drill bit, remove the existing stakes by drilling a short distance into the stake marks. Remove the retainer.
2. Install the new retainer into the cylinder nut and torque to 80/100 in. lbs.
3. To lock retainer into place, use a center punch positioned in the seam between the retainer and the cylinder nut and stake the new retainer in two places approximately 180° apart.

**NOTE: Do not stake in the old stake marks.**